

# • BOAT SHOW GUIDE •



## PACIFIC SAIL & POWER BOAT SHOW

*and Marine Sports Expo*

**April 4-7, 2019**

Craneway Pavilion and Marina Bay Yacht Harbor, Richmond, CA

*PacificBoatShow.com*

Discover **Sailing**  
The Ultimate Adventure

Produced by:  
  
Sail America®



@PacificSailandPowerBoatShow



#PacificBoatShow



@PacificBoatShow

**INSIDE:**

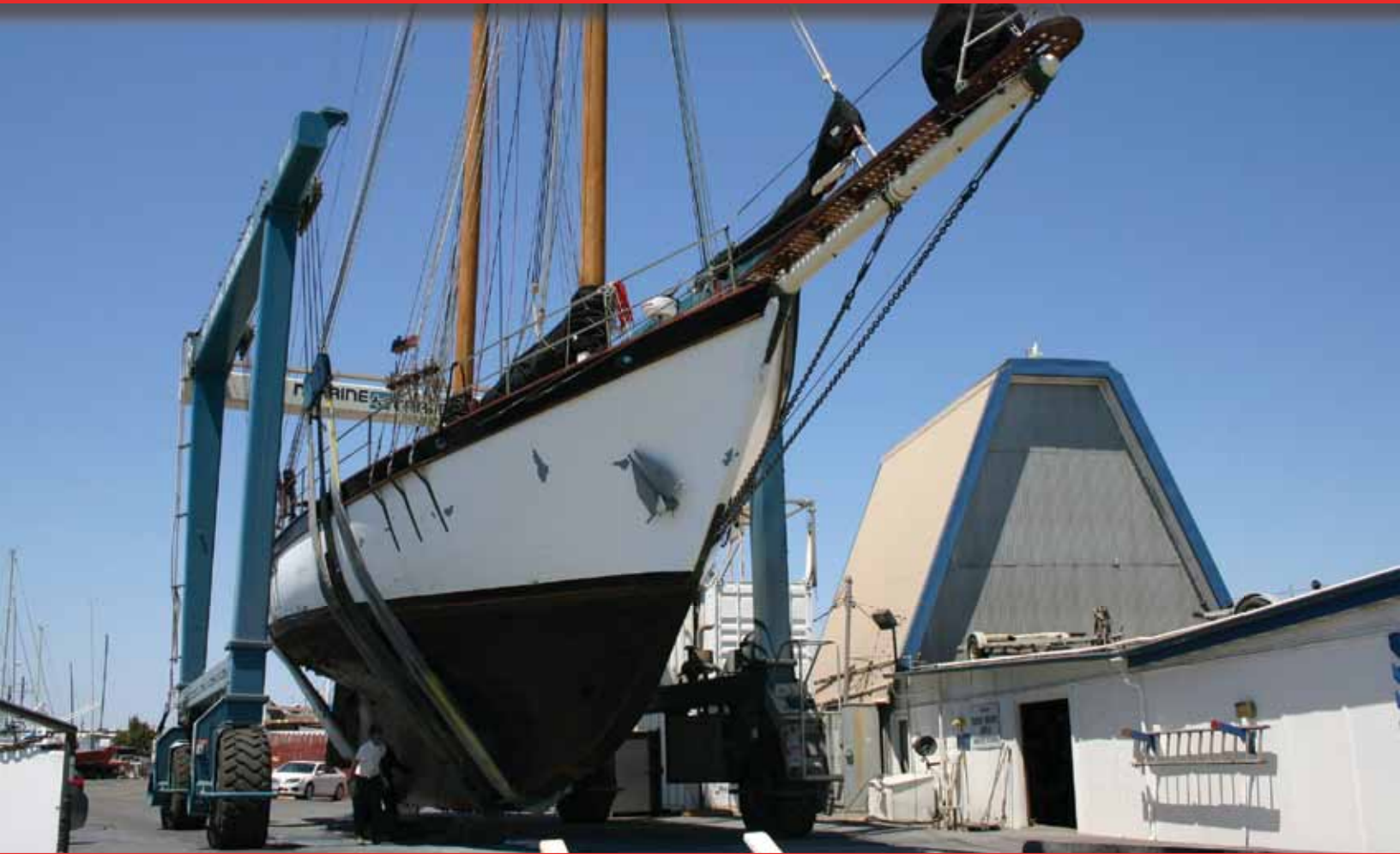
- Seminars
- New Products
- Boat Showcase
- Show Highlights



**SVENDSEN'S  
BAY MARINE**

BAY MARITIME GROUP

## THE LARGEST NETWORK OF MARITIME SUPPORT



Enter for a chance to win a **free bottom painting package** for your sail or power boat. Restrictions apply. Visit **booth N-3** for details.

**Pacific Sail & Power Boat Show • Booth N-3**

510-237-0140 • [sbm.baymaritime.com](http://sbm.baymaritime.com) • 310 West Cutting Blvd., Point Richmond, CA





# SVENDSEN'S MARINE & INDUSTRIAL SUPPLY

BAY MARITIME GROUP



## IN NORTHERN CALIFORNIA!

Presenting **great deals** on new **Zhik** and **Gill**  
plus extended in-store offers. Visit **booth N-3** for details.

**Pacific Sail & Power Boat Show • Booth N-3**

510-522-2886 • [www.svendsens.com](http://www.svendsens.com) • 2900 Main St. #1900, Alameda, CA

# Pacific Sail & Power Boat Show and Marine Sports Expo

April 4-7, 2019 • Craneway Pavilion and Marina Bay Yacht Harbor, Richmond, CA

## Location

In the historic Craneway Pavilion and Marina Bay Yacht Harbor in Richmond, CA. See pages 36-38 for accommodations, transportation, directions and parking details. No pets are allowed in the show. Only guide dogs, service dogs, or other animals individually trained to provide assistance to an individual with a disability are allowed.

## Show Hours

Thursday, April 4.....10 a.m. – 6 p.m.  
Friday, April 5.....10 a.m. – 6 p.m.  
Saturday, April 6.....10 a.m. – 6 p.m.  
Sunday, April 7.....10 a.m. – 5 p.m.

## Admission

One-Day Adult Ticket.....\$18  
Two-Day Adult Ticket (online only).....\$28  
Four-Day Pass (online only).....\$48  
Children 12 and younger.....Free  
(must be accompanied by a paying adult)



## Contents

Ticket Information/Show Hours .....	4
Sail America Welcome .....	6
New Boat Showcase .....	8-12
Cool Products.....	14-17
Show Highlights .....	18-20
Discover the On-the-Water Lifestyle.....	21
Advance Registration Seminars.....	22-24
Meet the Speakers .....	26-28
Let's Party .....	30
Exhibitor List.....	32-34
The Venue .....	36
Travel and Contacts.....	38
Accommodations.....	38

### Skip The Lines – Purchase Tickets Online

Save time and money by purchasing your tickets online at [www.pacificboatshow.com](http://www.pacificboatshow.com). Enter Promotional Code "SHOWGUIDE" and save \$2 on the ticket price.

#### Important Show Updates:

All information in this directory is accurate at the time of printing. Sail America may, however, make changes and substitutions to the show layout, event programming, seminars and exhibitor listing, etc.

Please visit [www.pacificboatshow.com](http://www.pacificboatshow.com) for the latest show news and updates.



Follow us on Instagram @PacificBoatShow



Follow us on Twitter at @PacificBoatShow



Join us on Facebook at [www.facebook.com/PacificSailandPowerBoatShow](http://www.facebook.com/PacificSailandPowerBoatShow)

Thank you to our sponsors





# The All New Catalina 425

5 SERIES



The Catalina 425 may be just the right boat for you. The style is bold and contemporary, incorporating a large, comfortable cockpit and excellent ergonomics that are Catalina hallmarks.

This is a performance-oriented design with a solid lead keel and a hull form with long waterline and generous – but not exaggerated beam for stability and predictable, responsive handling.

The three-cabin interior is carefully detailed with lots of drawers and solid teak fiddles and trim, complemented with maple hull panels, creating a bright, yet warm and inviting, traditionally crafted atmosphere.

All of the famous 5 Series features are incorporated, including all L.E.D. lighting, 28" lifelines, and excellent access to all machinery and systems.

At Catalina, it's all about creating the best possible ownership experience. So if you're looking for a long-term relationship with a high-quality American brand, take a closer look at Catalina; the 425 may be just the right boat for your extended cruise.

Bay Area Dealer  
Farallone Yachts  
[faralloneyachts.com](http://faralloneyachts.com)

CE Category A



**Catalina** Yachts

**CatalinaYachts.com**

21200 Victory Blvd., Woodland Hills, CA 91367  
7200 Bryan Dairy Rd., Largo, FL 33777



# Official Show Guide

## Fulfill your passion for boating — Join us at the Pacific Sail & Power Boat Show

Welcome back to our fourth year of the Pacific Sail & Power Boat Show in Richmond. The Craneway Pavilion and Marina Bay Yacht Harbor venues combine for a terrific footprint on the shores of San Francisco Bay to host a show featuring exciting exhibitors — both on land and in-water — and so much more.

Walk the aisles inside the expansive Craneway Pavilion. Enjoy the exhibitors excited to talk with you about products, services, marine essentials and more. Have fun sharing stories and experiences about the boating lifestyle we all enjoy. The in-water portion of the show is a quick walk or shuttle bus ride down the San Francisco Bay Trail to the Marina Bay Yacht Harbor. As you walk the docks, enjoy the boats — both sail and power. From cabin cruisers to whalers to keelboats big and small, the in-water exhibitors will welcome you aboard to enjoy a visit and conversation.

I hope you can spend the entire day with us. There's so much to see and do. In addition to a show full of terrific exhibitors, there's an exciting line-up of seminars and special events. There are even food trucks and other food vendors to explore.

Most important is our “thank you” to the exhibitors, sponsors, vendors, hosts — and to you — for supporting the show and the industry. Sailing and boating fosters a special camaraderie. Our shared passion is a reason we are all here.

Enjoy your visit.

Warm regards,



Katie Kelly

Sail America Association Manager



KATIE KELLY



Produced by



### 24th Pacific Sail & Power Boat Show

#### Association Manager

Katie Kelly

#### Sales Manager

Sara Watson

#### Operations Manager

Jorgen Bateman

#### Show Office Support

Stephanie Grove

#### Discover Sailing

#### Coordinator

Jorgen Bateman

#### Finance Manager

Kayce Florio

Show Guide Published by

*Latitude 38 Media*

*We Go Where the Wind Blows*

[www.latitude38.com](http://www.latitude38.com)





# STRONGER LIGHTER FASTER

If you want something different, something fast, if you want an edge, it's best not to follow the crowd.

Doyle San Francisco  
[www.doylesails.com](http://www.doylesails.com)  
510 523 9411



# New Boat Showcase

See these boats and many more at the show dock - subject to change

## J/Boats and J/Composites

J/Boats and J/Composites are pleased to announce the new J/99, a 9.9 meter (32.6') crew-friendly, offshore-capable speedster currently under development at J/Composites in Les Sables d'Olonne, France. The J/99 is the newest addition to the J/Sport range, combining headroom and comfortable interior accommodation with the tiller-driven responsiveness of a sport boat. The sail and deck plan are optimized for easy handling with fewer crew, and incorporate the latest developments from the award-winning J/121 and the new Offshore Sailing World champion J/112E. The interior features twin aft cabins, a proper sit-down forward facing nav station, an L-shaped galley, and a private forward head with sail locker. Now more than ever, sailors are attracted to adventure-filled, signature events (Fastnet, Middle Sea, Chicago-Mac, etc.) where straight-line speed, sail handling, strategy and weather routing are all equally



put to the test. The J/99 is designed to excel in these events (both fully crewed and short-handed) while delivering the exhilarating, family-friendly experience the J Sport range is known for.



## Swiftsure Yachts

Swiftsure Yachts is excited to feature the all new Hallberg-Rassy 340 at the 2019 Pacific Sail & Power Boat Show. Synonymous with cruising comfort, quality and performance, Hallberg-Rassy has once again proven they are at the forefront of yacht design and build technology with this new model.

Designed by renowned naval architect Germán Frers, the 340 boasts twin rudders for improved steering in all conditions, optional duel helms (tiller is standard), a clean and user-friendly deck layout, and an integral bowsprit to fly a spinnaker or code zero. As one would expect from HR, the 340's interior is spacious, airy and constructed to the highest standard.

Climb aboard and step below, you won't be disappointed. Visit Swiftsure Yachts on the water at the Pacific Sail and Power Boat Show to view the new Hallberg-Rassy 340.

## RS21 Keelboat

The RS21 responds to the need for a progressive, simple and affordable solution for keelboat clubs that increasingly see the opportunity for fleet ownership, league competition and training. Pay-as-you-go. Team up and do it together.

The RS21 is specifically designed for fleet purchase, with attributes that will appeal to individual buyers as well. It puts close racing over ultimate performance. Convenient ownership over complexity. It maximizes low maintenance, value and pure sailing enjoyment. This is the boat to bring wider availability and popularity back to keelboat racing. Realistic costs allow appealing club charter fees – or affordable investment by syndicates of sailing friends. Visit West Coast Sailing at their display in Craneway Booth I9, or sign up for a test sail at the marina!





TOUR THE BENETEAU  
**POWER AND SAILING YACHTS**  
AT PACIFIC SAIL AND POWER BOAT SHOW  
APRIL 4-7, 2019

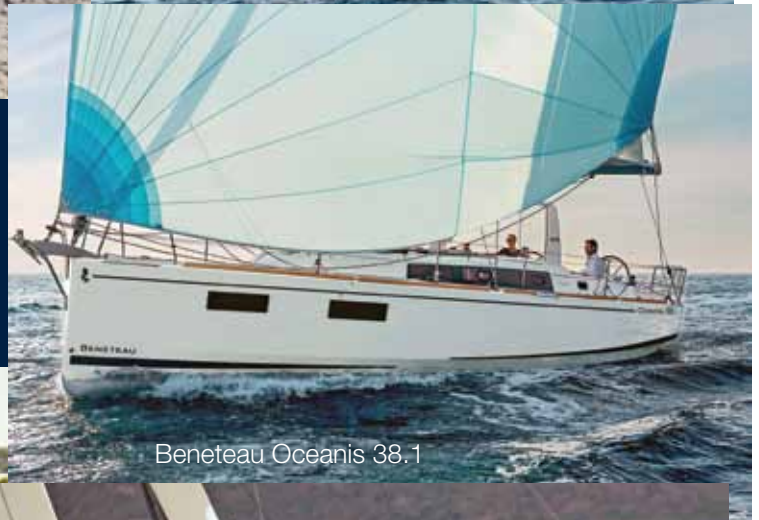


Beneteau Oceanis 46.1



Beneteau Oceanis 35.1

The most exquisite alliance of simplicity and performance for avid sailors across the globe, accommodating personal sailing preferences like never before, and where limitless innovation brings all cruising dreams within reach.



Beneteau Oceanis 38.1



Beneteau Antares



Beneteau Oceanis 51.1

PRESENTED BY



**PASSAGE**  
N A U T I C A L  
E N T E R P R I S E S



**BENETEAU**

Point Richmond (510) 236-2633 / Oakland (510) 864-3000 / [PassageNautical.com](http://PassageNautical.com)



# New Boat Showcase



## J/88 Family Daysailer

The J/88 is not only comfortable and easy to handle, but her sweet balance, effortless speed and comfort will maximize your sailing fun. J/88 truly hits the sweet-spot in J Boat's new performance sprit range – large enough to provide the creature comforts of a sit-in cockpit, inboard diesel, overnighting interior and head; and small enough to be single-point lifted, owner trailered and stored. Plus, there's no wood on deck, minimum systems, and a simple functional interior so you can maximize sailing time and minimize on-board maintenance.

If sailing is having your cake and eating it too, then the J/88 is like ordering the whole dessert menu. Design highlights include a high-aspect, non-overlapping sail plan (no genoas) with a light weight carbon fiber mast - deck stepped configuration for easy rigging and tuning as well as for keeping the water out and the main cabin dry.

Join the growing West Coast fleet and see on the docks with Sail California.

## Beneteau Oceanis 46.1

The Oceanis 46.1 boasts all the features of a large cruising yacht, with a rare balance between elegance, usable space and performance. Her stepped hull opens up an incredible amount of space inside and yet her seakeeping performance is still impressive. A large number of clever customizable fittings make her easy to sail and pleasantly comfortable.

The Oceanis 46.1 is based on a Finot-Conq plan, keeping the distinctive stepped hull of the 51.1. Apart from her performance at sea and the huge amount of space that set this boat apart, this architecture makes optimal use of the cockpit beam.



## Catalina 425

The Catalina 425 is an all-new design that assumes the position in the Catalina line held by the legendary Catalina 42. Although it is new and contemporary in styling it is designed to endure in function and aesthetics in the Catalina tradition. The 425 incorporates all the valued hallmark Catalina features; a functional spacious cockpit, a comfortable, carefully detailed interior and all the "5 Series" featured that have redefined the Catalina brand.

In 2017 the Catalina 425 was named Cruising World Magazine's "Domestic Boat of the Year".

"Not every naval architect gets the chance to take a second swing at a popular design a couple of decades after the splash of the original. But that is precisely the opportunity that presented itself to Catalina Yachts designer Gerry Douglas with his Catalina 425. The company's original 42-footer debuted 23 years ago, and before all was said and done, Catalina produced more than 1,000 units of the highly suc-



cessful production boat. Now Douglas has taken all he learned in the intervening years and amalgamated that knowledge in the new 425. And he knocked it out of the park." – Cruising World  
On the docks with Farallone Yachts.



# New Boat Showcase

See these boats and more at the show dock - subject to change



## Oceanis 51.1

The Oceanis 51.1 launches the new generation of Oceanises, with taut lines, a new stepped hull and well-organized deck plan. This 51-foot cruiser is elegant, cleverly designed, incredibly comfortable and fast. She is a joy to sail on with friends and offers improved performance. Your Oceanis 51.1 can now look the way you want, with lots of new customizations and different 700 combinations.

## Tiara 38LS

The 38 LS is the reinterpretation of luxury sport yachting, a fusion of sophistication with the demands of day yachting. The epitome of functionality, its walk-around capabilities, bridge and lounge seats via both port and starboard entries with an island style outdoor galley are just some of the features through which the 38 LS defines a new luxury sport yachting segment. Multiple and easily accessible social zones allow friends and families of all ages to experience a myriad of waterplay activities, exterior grilling and dining delights along with luxury lounging via convertible sun pad, elegant cabin and aft cockpit areas. Wrap around forward bow seating provides more space to laze and enjoy time on the water with family and friends. See the 38LS and the full Silver Seas lineup at the show dock.



## 50 Cantius

The 50 Cantius perfectly blends luxury and function in a space that accommodates you, friends and family in unrivaled comfort. The 50 Cantius is ideal for both weekend adventures and extended trips making it the perfect yacht to compliment any lifestyle. Aboard you'll find every amenity you could ask for at sea including refined staterooms, sophisticated heads and plenty of space for entertainment. The expansive Cockpit of the 50 Cantius offers an array of premium accommodations, making it difficult to find your favorite feature. The plush wrap-around seating is one of the biggest stars in the space - easily accommodating upwards of 10 guests at a time.



# New Boat Showcase

## Sun Odyssey 519

The Sun Odyssey 519 demonstrates elegance, seaworthy qualities and unequalled comfort.

Designed by world-renowned naval architect, Philippe Briand, the new Sun Odyssey 519 incorporates all the latest design developments and innovations. Each detail has been carefully studied to offer high functionality and aesthetic appeal.

A spacious sailboat of 52-ft the Sun Odyssey 519 is available in configurations of three to five cabins.



## Hanse 388

The new Hanse 388 is an exceptional yacht which stands for sailing pleasure without compromise. This model provides plenty of enjoyment while underway or while inside. Nimble, and responsive at the helm, with all lines led aft, make this a fun boat you can single hand while friends and family enjoy the cockpit without feeling they're "in the way".

Visit JK3 Yachts at their display and see all this boat has to offer.



Phil Sharp Racing | Zero CO2 Emissions | 2017-2018 Class 40 Champion

© www.philsharp racing.com | Image depicts non-standard flexible panels, not available for sale.  
For more information visit [www.philsharp racing.com](http://www.philsharp racing.com).

## SunPower® Flexible Solar Panels

### More Power

- The only panels with prime Maxeon® cells
- Highest efficiency silicon cells on the market<sup>1</sup>

### Higher Quality

- Built in SunPower factories
- Top materials and rigorous testing

Visit Booth D4 to learn more  
[sunpower.com/flex](http://sunpower.com/flex)

# SUNPOWER®

1 Based on survey of datasheet values from websites of top 20 manufacturers per IHS, as of January 2018.

© 2019 SunPower Corporation. All Rights Reserved. SUNPOWER and MAXEON are registered trademarks of SunPower Corporation in the U.S. and other countries as well.





## Visit Mexico's First Port of entry south of the border

  
**MARINA CORAL**  
\*\*\*\*\*  
ENSENADA, BAJA CALIFORNIA

### WORLD-CLASS MARINA IN ENSENADA OFFERS:

- 353 slips up to 110'
- Ensenada's only fuel dock-diesel & gasoline
- Check-in clearance assistance with Immigration, Port Captain and Customs.



### ALSO, FEATURES A FIVE-STAR HOTEL WHICH ACCOMMODATIONS INCLUDES:

147 suites, pools, spa, restaurants, bars, transportation to San Diego, trips to the vineyards and outstanding landscapes for weddings and events.

### CONTACT US

**VHF CHANNEL 71**

Latitude 31°51'38.59" N

Longitude 116°39'36.342" W

**USA 1 (866) 302-0066**

[marina@hotelcoral.com](mailto:marina@hotelcoral.com)

[www.hotelcoral.com](http://www.hotelcoral.com)

Live the #CoralExperience

    | Follow us

# Cool Products

The Pacific Sail & Power Boat Show is pleased to feature the following products from some of our exhibitors. Please visit their booths and experience them for yourself. For a complete list of products at the Pacific Sail & Power Boat Show, see the show website at [www.pacificboatshow.com](http://www.pacificboatshow.com).

## Sun Powered Yachts

### FLEXIBLE SOLAR PANEL

Sun Powered Yachts is an authorized dealer of SunPower flexible solar panels and will be featuring a new product at the Richmond show.

The new SunPower 170W flexible solar panel is lightweight, flexible, and powerful. This is the highest efficiency flex panel (25%) on the market. This means more power in less space, and is a great solution for mobile power needs afloat.

Visit Sun Powered Yachts in the Craneway, Booth D4 to learn more.



## Boatswain's Locker

### DIESEL OUTBOARD

British diesel engine innovator, Cox Powertrain, has launched the world's first 300hp diesel outboard. The CXO300 is the world's highest-powered diesel outboard engine and is expected to completely shake up the US commercial and recreational boating markets.

Visit Boatswain's Locker in Craneway Booth A6 to see it firsthand.

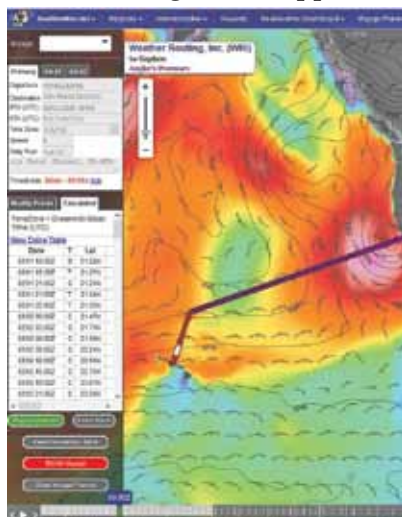


## Weather Routing, Inc.

### SEAWEATHER.NET

SeaWeather.net is Weather Routing Inc.'s supplemental and interactive weather website. On SeaWeather.net, users can view a wide array of weather forecasting products, including wind and wave maps, ocean currents, sea surface temperatures, tropical systems, satellite data, radar imagery, and much more. Various subscription packages are available depending on the user's needs.

Demonstrations of SeaWeather.net will be held at the Weather Routing booth L16 in the Craneway, along with complimentary forecast packages for all new clients.



## Live 2 Wake

### NEW SEADEK COLORS AND DEK MAGIC

You love your SeaDek. We knew you would. We also know that life happens, and with life comes mess. That's why we created Dek Magic, a cleaner specifically designed to keep your SeaDek looking like new. So next time life happens on your boat, breathe easy — We Got Your Dek.

SeaDek has also released the following new colors: dark grey, cream, cappuccino, Terra, Chocolate, Smoke Grey

Visit Live 2 Wake in Craneway Booth K10 for more details.





## Mantus Marine

### MOORING SNAP SHACKLE

Mantus Marine will be presenting several new and updated products for you at the show.

The Mantus Mooring Snap Shackle is designed to easily and securely attach a boat to a mooring ball. Simply load floating mooring line or the metal ring into the snap shackle and close the gate and lock the pin. The Mantus Mooring Snap Shackle features a locking pin to ensure the gate stays locked once secured. We believe this is the strongest and the smartest way to moor your boat. Made from Duplex Stainless Steel to stronger and more corrosion resistant.

Features a proprietary secondary pin locking mechanism that ensures the gate stays closed. Stop by to see Mantus Marine in Craneway Booth K16!



## Inflatable Yacht Dock

### INFLATABLE SPORT BOATS

The Yacht Dock transforms your swim deck into a luxurious 10 foot by 6 foot extended swim platform. Designed to immediately give your dock, sailboat, or yacht the additional space off the side that you've always wanted. The perfect lounging, swimming, and relaxing inflatable platform sits 6" out of the water providing incredible stability. Attach anywhere around your boat or even anchor it close. The Inflatable Sport Boat's Yacht Dock is a must have for every captain that needs more room off the side of their boat, with limited cabin space. Inflates in 8 mins, deflates in 5 mins to a storage size of 40"x 16" x 14" that fits anywhere. Visit Inflatable Sport Boats in Craneway Booth N7 and take a look.



# Fast Furl



**NEW FX+**  
Continuous Line Furlers

- Lightweight Carbon Housing with Integrated 360 Line Exit
- Exclusive Quick Release Attachment
- The Only Furler on the Market Featuring a Bi-directional Lock
- Converts to Top-Down Style



**facnor®**  
FURLING SYSTEMS

facnor.com/ | tel: (704) 597-1502  
sales@wichard-sparcraft.com

# Cool Products

## Rewind Furler

UBI MAIOR

REWIND®, a bow sail furler, is a brilliant solution for the management of both code zero and gennaker sails. In fact, it is the first-ever furler with a PATENTED



ratchet system, which can be excluded. This product is advantageous firstly because it facilitates sail winding: the internal ratchet (which is easy to fit by textile activation), stops the sail unfolding during winding. Thus, the loop can be disengaged while the sail is closing, without the risk of the sail unfolding involuntarily. This increases the sailor's safety, as in rough seas or strong winds, he/she can let go of the loop to keep his/her balance or deal with any unexpected problems. These features are all combined in a compact and lightweight product.

On display with Euro Marine in Craneway Booth G3.

## Wakespeed Offshore

NEW WS500 ALTERNATOR REGULATOR

"Having been in the DC charging business for more than 20 years, I can tell you that the notion of using current as well as voltage to regulate charging has always been the holy grail for intelligent battery care," says Rick



Jones, former Balmar VP and Co-Owner at TJCMicro. "Wakespeed Offshore's new WS500 Advanced DC Charge Controller finally delivers the ability to use both components and charge batteries the way that battery manufacturers have always recommended." Visit Wakespeed Offshore in Craneway Booth K4 for all the details.

## Antal Winches

Antal provides insight into their line of winches and marine hardware, "Quality is the greatest goal in our winch design, that's why we aim at creating winches that are strong and light. What characterizes Antal winches is: high quality roller bearings, CNC machined aluminum parts, high-resistance alloy toothed crown gears, low friction axels treatments, differentiated drum knurling."



"Our winches are created entirely in house. We overview closely the life of our products and this allows us to do something very important: innovating the whole winch family continuously, as we gain experience from the nautical market."

On display with Euro Marine in Craneway Booth G3.

## Richards Marine

EFOY COMFORT MOBILE FUEL CELL

SFC energy, the market leader in mobile fuel cells with over 10 years of experience is the manufacturer of EFOY. EFOY COMFORT provides fully



automatic, silent power to boaters everywhere. Ideal for sailors the EFOY COMFORT has an integrated controller to monitor charge levels and automatically charges batteries to full capacity. Easy to install and weighing less than 20lbs EFOY is about the size of a small briefcase. Fuel cartridges are safety tested, easy to install and can last for months depending on load. Visit Richards Marine Marketing at Craneway Booth H9 to see for yourself, and learn more at [www.efoy-comfort.com](http://www.efoy-comfort.com).



# Mainsail Management

BY FORESPAR

In-boom furling engineered for your boat.

Nine different sizes & models for cats & monohulls.

Multi-factor design program assures fit.

Allows for efficient full battened sail shape unlike in-mast furlers. Elegant tapered styling in carbon or aluminum. For more info go to: [www.forespar.com](http://www.forespar.com). See us at Craneway Booth K5.



# Whisker & Spinnaker Poles

BY FORESPAR



The fastest way to get downwind! Carbon, aluminum, 50/50

combos. Twist lock, tri-reacher or adjustable length line control models. Whisker poles are faster downwind than asymmetrical sails on most boats twist lock Velocity™ Carbon Tri-Reacher™ For more info go to: [www.forespar.com](http://www.forespar.com). See us at Craneway Booth K5.

# Karver Winches

In 2018, Karver acquired the Pontos company with benefits 15 years of experience to make this range of winches even more efficient. Do not try to compare our winches with others: they are simply incomparable! The KWS range (Ultra Speed) and KWP (Ultra Power) are 4 speed winches: 2 classic speeds and 2 extras for either 6 times more speed (KWS) or 3 times more power (KWP). A 2 in 1 winch! The Kompact (KWK) is an ultra-compact 2-speed winch for sailboats up to 40 feet (12 meters): 1 ultra-fast speed and 1 ultra-powerful speed.



The range meets both the expectations of racers (speed) but also blue-cruisers & families who can enjoy the power developed to grind without forcing. On display with Bainbridge International at Craneway Booth C15.

# The Fastest Way To Get Downwind



**Whisker Poles Are Faster Downwind Than Asymmetrical Sails On Most Boats**

- Carbon, Aluminium, 50/50 Combos
- Twist Lock, Tri-Reacher or Adjustable Length Line Control Models

World's #1 Whisker & Spinnaker Poles

# FORESPAR®

PERFORMANCE PRODUCTS

For More Info Go To: [www.forespar.com](http://www.forespar.com) | 949.858.8820

See Us at the Show - Booth K5



CALL US TODAY  
**401-847-7960**



**GORI PROPELLER**

experience the difference  
Lowest drag, 100% reverse thrust. Unique Overdrive pitch.



**SHAFT SHARK**  
Best rope & line cutter there is! Two piece, simple install. No prop removal.



**Now 2X More Teeth!**



**VARIPROP**

Feathering Prop. Low drag, adjustable pitch, outstanding reverse.

**MOONLIGHT HATCHES**

High quality hatches & portlights. Flush, compact, elegant design.



[sales@ab-marine.com](mailto:sales@ab-marine.com) | [ab-marine.com](http://ab-marine.com)

See you at the Pacific Sail & Power Boat Show! Booth: K3

**ANDERSEN**  
STAINLESS STEEL WINCHES

Photo © Nijad - Yachts of Sweden

# Better Winches Better Sailing

Fewer wraps  
Smoother operation  
Reduced rope wear  
Less maintenance  
Timeless finish

Purchase select  
Andersen Winches  
between April 1 & May 31, 2019  
and **get up to \$300 off.**

Visit [andersenwinches.com/rebateusa](http://andersenwinches.com/rebateusa)  
for more information.



## Show Highlights

Full show highlights can all be found on the show website at [www.pacificboatshow.com](http://www.pacificboatshow.com).



### Stand Up Paddle Board Demo

**SATURDAY, APRIL 6 AND SUNDAY, APRIL 7**

Learn more about the sport that originated in Hawaii and is now one of the fastest growing water sports! Get 'on board' and come participate or view the SUPs in the Inner Harbor Basin. From lessons and rides to gear and local paddle destination tips! Instructors and fans of SUP will be onsite to introduce you to the sport or talk with you about the latest gear choices and how you can participate in stand up paddling in the Bay Area. Stand Up Paddling (SUP) offered by 510-Waterline at the F-Dock at Marina Bay Yacht Harbor April 6 and 7 (Saturday and Sunday - weather permitting):

- Free 20-minute Intro SUP rides on Saturday from 9 a.m.-1 p.m.
  - SUP Yoga class Sunday morning from 9-10:30 a.m.
- Find out more and pre-register to save your place at [www.510waterline.com](http://www.510waterline.com)

### Authors' Corner

Stop by the Authors' Corner and pick up a great new read from your favorite sailing author. Chat with the experts, receive some great advice for your next sailing trip, get a signed book, and hear a tale or two about any number of sailing topics and adventures. Authors will be set up in the Seminar Pavilion.





Over 100 Years of  
Innovation & Service  
From The Original  
Sailcloth Company

**AIRX**  
SPINNAKER FABRICS

**PLASTIMO**

**SPX** Premium  
Polyester  
Sailcloth

**KARVER**  
sailing experience

**DIAX**  
LAMINATED SAILCLOTH

**watt&sea**

**YALE** CORDAGE

**Italwinch**  
systems

• sailcloth • furling systems • liferafts • safety • hydrogenerators • compasses • hardware •

**BAINBRIDGE**  
INTERNATIONAL  
[www.bainbridgeintusa.com](http://www.bainbridgeintusa.com)



### *Maritime Training*

- ✓ *New State-of-the-Art Facilities*
- ✓ *Captain's License 100 Ton & OUPV*
- ✓ *New Boater Education Series*
- ✓ *80 USCG Approved Courses*
- ✓ *Classes Available Throughout California*
- ✓ *OnLine Courses Too!*

Visit Our Website or Call for Details

[www.TRLMI.com](http://www.TRLMI.com)

Toll Free: 888-262-8020

3980 Sherman Street, Ste. 100, SD, CA 92110

## ONE STOP SHOPPING FOR YOUR YACHTING LIFESTYLE

Training • Certification • Charter

**Club  
Nautique**  
You're at the helm!

Alameda • 510-865-4700

Sausalito • 415-332-8001

[www.clubnautique.net](http://www.clubnautique.net)



**JEANNEAU**

Exclusive Dealer Sail & Power  
Northern California & Mexico

**Cruising Specialists**

298 Harbor Dr., Sausalito, CA

415-366-7267 • [www.cruisingspecialists.net](http://www.cruisingspecialists.net)

**Charter Vacations Less Than  
4 Hours From SFO**

**Club  
Nautique  
de Mexico**

510-257-4292 • [www.clubnautique.mx](http://www.clubnautique.mx)

# Show Highlights *continued*

Full show highlights can all be found on the show website at [www.pacificboatshow.com](http://www.pacificboatshow.com).

## Coast Guard Helicopter Demo

WEATHER & RESCUE DEPLOYMENT DEPENDENT

Join the U.S. Coast Guard as they arrive by helicopter to perform a rescue demonstration to connect boating enthusiasts with the rescue efforts offered to



mariners. Watch as men and women of the U.S Coast Guard show us all what is involved when they perform a rescue. You will also have the opportunity to listen as public and water safety is presented to a captive audience. Please note: they will postpone their planned visit with us should an emergency arise. Please check the website for the latest update on their visit.

## Radio-Controlled Model Sailboat Racing & Display

Love model boats? Do you own one? Bring it down to the Inner Harbor Basin each morning and afternoon during the show to sail it or race it. Watch as the mini yachts make their way through the Basin, keeping you on the edge of your seat for the win. Visitors may even be able to try maneuvering the models with a bit of instruction and supervision.



**CRUISING MÉXICO**  
PACIFIC SAIL & POWER BOAT SHOW  
Hosted By Dick Markie, Paradise Marina

• **THU, APR 4<sup>TH</sup>, 2019 / 2:15 PM**  
Mexican Cruising Paper Work

• **FRID, APR 5<sup>TH</sup>, 2019 / 11:45 PM**  
Cruising Mexico

No Charge- Mexican Prizes • Questions about México will be answered! | [marina@](mailto:marina@)



# On-the-Water Lifestyle

Welcome to the Discover Sailing & Boating Clinics at the Pacific Sail & Power Boat Show



Whether you are a novice or experienced on the water, there is something for everyone in the programs offered at the 2019 Pacific Sail & Power Show.

Sail the brand new RS21 as part of the Discover Sailing program at the 2019 Pacific Sail & Power Boat Show. This is a 45 minute test sail and not a lesson, experienced sailors please join us. PFDs will be provided, and be sure to bring suitable sailing gear, you will get wet. Advanced registration for these free rides is required, visit [www.pacificboatshow.com](http://www.pacificboatshow.com) for more information.

Also a part of the Discover Sailing program this year are cruises and clinics. Whether you are a cruiser or a racer, thinking about the next boat or that next charter

vacation, or looking to try out the latest boats on offer and learn about new technologies and styles, one of these programs will be right for you.

To help boaters get the most out of their vessels and feel confident when considering their next boat, we are featuring several hands-on on-the-water clinics led by some of the best instructors in the Bay Area.

We have two terrific partners who will run courses for boaters interested in sailing courses and powerboating courses – Club Nautique and Passage Yachts, both based in the Bay area. Courses offered may include topics such as: Catamaran Sailing Clinic, An Intro to Sailing A Boat Over 40', Twin Engine Clinic – Maneuvering & Docking, and many more.

Full course descriptions, schedules and fees can all be found on the Show website at [www.pacificboatshow.com](http://www.pacificboatshow.com)

Sponsored by



Produced by



**MEXICO SEMINARS**  
**POWER BOAT SHOW**  
Paradise Village Marina Harbor Master

• SAT, APR 6 <sup>TH</sup> , 2019 / 2:15 PM Cruising Mexico	• SUN, APR 7 <sup>TH</sup> , 2019 / 11:45 PM The Puddle Jump to the South Pacific
--	--

[paradisevillagegroup.com](http://paradisevillagegroup.com) • Tel. 011 52 322 226 6728 • [www.paradisevillage.com](http://www.paradisevillage.com)

# Advance Registration Seminars

Sign up in advance to guarantee a spot. [www.pacificboatshow.com](http://www.pacificboatshow.com)

## Mahina Offshore Cruising Seminar

JOHN NEAL & AMANDA SWAN NEAL  
WITH NIGEL CALDER

Self-sufficiency and preparation for your cruising adventures, whether to Mexico, the South Pacific, Caribbean or the Med are the focus of this intensive eight-hour seminar. Technical guru and author Nigel Calder joins John & Amanda Neal for 18 dynamic topics illustrated with PowerPoint presentations and documented in included 260-page Offshore Cruising Companion. In-depth topics include: Selecting and Outfitting a Boat for Offshore Cruising, Diesel Engine Overview, Storm Survival Tactics, Rigging & Sails, Communications, Anchoring, Piracy & Security, Managing Your Escape, Cost of Cruising and Best Worldwide Cruising Areas. This is the 171st Offshore Cruising Seminar John and Amanda have presented to 12,000 sailors since 1976. Visit <http://www.mahina.com/seminar.html> for the list of topics and schedule.

John Neal's 377,000 ocean miles over 45 years include



30 years of conducting 204 worldwide sail-training expeditions aboard Mahina Tiare, a Hallberg-Rassy 46 detailed on [www.mahina.com](http://www.mahina.com). He is author, co-author or contributing author of 16 books. John and his wife Amanda annually spend seven months at sea, sailing

## Richmond: Before, During & After the Show

MAP IT/BOOK IT @[VisitRichmondCA.com](http://VisitRichmondCA.com)  
FIND IT @[RichmondOnTheBay.com/GO](http://RichmondOnTheBay.com/GO)

☒ EAT  
☒ DRINK  
☒ STAY  
☒ PLAY

Richmond welcomes the 2019 Pacific Sail & Power Boat Show in its 4th year at the Craneway Pavilion. Be sure to catch the shuttle or take a leisurely walk down to the in-water exhibits in the Marina Bay Yacht Harbor. You won't want to miss all the new and innovative gear, equipment and boats.

While you're here, enjoy Richmond! We have 3 breweries, 4 wineries, international flavors and waterside jazz. Not to mention 5 yacht harbors & marinas with access to watersports, 32 miles of shoreline and 34 miles of SF Bay Trail. And Richmond is very dog-friendly! 🐾

Visit our booth and pick up a trail guide—it's packed with over 25 places to eat & drink, 12 hotels and lots of fun things to do. Call us for help in planning your stay! (510) 660-2807



The Richmond Trail Guide is brought to you by:



PICK UP A RICHMOND TRAIL GUIDE AT THE SHOW & find your hidden gem!



# Advance Registration Seminars

Advance Registration and Fee Required

10,000 miles. Their seminars incorporate the latest information, techniques and resources.

Amanda Swan Neal's 335,000 ocean miles include completing the Whitbread Around the World Race as rigger aboard Maiden, two Sydney-Hobart Races and seven Cape Horn roundings. She has worked as a rigger and sailmaker in England, Australia and New Zealand. Additional experience includes coaching women's international sailing teams and tall ship sail-training. She has instructed aboard Mahina Tiare II & III since 1994 and is author of Diesel Engine Essentials, A Learning and Coloring Book and The Essential Galley Companion plus 125 magazine articles.


Nigel Calder is best known for his 'Boatowner's Mechanical and Electrical Manual' and 'Marine Diesel Engines'. Nigel and his wife, Terrie, spend several months every year aboard their Malo 46, 'Nada'. They have cruised the East Coast of North America and the Bahamas; the Caribbean; the U.K and points as far north as the Faroe Islands; the Atlantic coasts of Ireland, France, Spain and Portugal; and Scandinavia.

## Understanding & Troubleshooting Boat Electrical Systems

NIGEL CALDER

The number one source of problems on boats large enough to have an electrical system, both power and sail, lies in these electrical systems. Tech guru Nigel Calder, author of the best-selling 'Boatowner's Mechanical and Electrical Manual' (now in its 4th edition, with over 300,000 copies sold) takes participants through the core design and installation requirements necessary to head off electrical systems problems, and then delves into step-by-step troubleshooting techniques, including using a multimeter, that will rapidly identify most problems should they arise. Not only will you leave class with a far better understanding of your electrical systems and knowing how to fix common problems, but you will also likely save the price of admission by not having to make service calls or swap out perfectly good parts in search of solutions. No previous experience is required.

**Afterguard Sailing Academy**




**See us at Booth H16**

Did/does the person you tried to sail with have a square mouth?

**Afterguard, the fun "No Yelling" place to get a great education changing fear to passion.**

**Afterguard is the Affordable way to ASA**



 **Charter/Instr Fleet 13'-43' Keelboats & Catamarans**

 **ASA Basic to Ocean Week long or Weekends**

 **Youth scholastic programs Summer Cruising Camps**

 **Membership Savings on Courses, Charters, Events**

Excellent ASA+ Instruction - Great Prices - Sail San Francisco Bay

**www.afterguard.net 510 535-1954**

**ADVANCED MAINSAIL MANAGEMENT**



**World's Largest Builder of Custom In-Boom Systems**

- Nine Different Sizes & Models for Cats & Monohulls
- Multi-Factor Design Program Assures Exact Fit
- Allows For Efficient Full Battened Sail Shape Unlike In-Mast Furlers
- Elegant Tapered Styling in Carbon or Aluminum

**Aluminum | Carbon | Electric**



**The Worldwide Leader for In-Boom Reefing Systems**

**LEISURE FURL™**

www.leisurefurl.com | 949.858.8820 by Forespar

**See Us at the Show - Booth K5**

# Advance Registration Seminars

## Marine Diesel Engines Maintenance & Troubleshooting

NIGEL CALDER

The diesel engine is a critically important piece of safety equipment aboard any cruising boat, both power and sail. Tech guru Nigel Calder, author of the best-selling 'Marine Diesel Engines' (now in its 3rd edition, and used as a text book in numerous diesel classes) brings his unique brand of humor to a seminar for boat owners, both power and sail, that want to get the most out of their time on the water. Distinguishing between contemporary and older diesels, Calder details often overlooked critical installation issues, and takes a careful look at fuel, oil, cooling, airflow, and powertrain systems, describing in detail all normal maintenance procedures together with basic troubleshooting techniques for common diesel engine problems, defining what the untrained boat owner can reasonably be expected to do and what should not be attempted. You will come away from this seminar with an enhanced understanding of your engine and the confidence to carry out routine maintenance, which



alone will save you the price of admission. No previous experience is required.

Nigel Calder is best known for his 'Boatowner's Mechanical and Electrical Manual' and 'Marine Diesel Engines'. Nigel and his wife, Terrie, spend several months every year aboard their Malo 46, 'Nada'. They have cruised the East Coast of North America and the Bahamas; the Caribbean; the U.K and points as far north as the Faroe Islands; the Atlantic coasts of Ireland, France, Spain and Portugal; and Scandinavia.

**- EXPLORE -**  
*The Sea of Cortez*

[f](#) [t](#) [/purelapaz](#) [www.golapaz.com](http://www.golapaz.com)

**México**  
visitmexico.com

**La Paz**  
Boja Jar

**MARINA CORTEZ**  
LA PAZ

*Mexico's Premier Marina*

50 slips, accommodating even the largest vessels.  
Electricity at each slip and Wireless Internet Access.  
The most modern Marina Design in Mexico.

[www.MarinaCortez.com](http://www.MarinaCortez.com)

Email: [dockmaster@marinacortez.com](mailto:dockmaster@marinacortez.com) • Office: +52+612 123 4101  
Fax: +52 612 125 4212 • From the USA: +52+1+612 157 0013



# FEEL THE FREEDOM

With an Independent Self-Steering Windvane AND 'Ready to go' Emergency Rudder

- Steers 24/7 - your best crew member!
- Install off center, with davits, arch...
- No lines connecting to wheel or tiller
- Confidence in case of steering or rudder failure



Winning Windvane!  
GOLDEN GLOBE RACE 2018



STEERING THE DREAM

Booth  
**E15**

**SARAH & WILL'S**  
FREE CRUISING  
SEMINARS:

- Self Steering Windvanes & Emergency Rudders
- CRUISING FORUM - with Panelists John & Amanda Neal
- Tips & Tricks: Cruising the Coast, Mexico, & South Pacific

THU APR 4 2:15PM

FRI APR 5 2:15PM  
Free Cake to celebrate GGR Win!

SAT APR 6 11:45AM

## SAN JUAN ISLANDS



### 6-Day Learn-N-Cruise

Fly to Bellingham, WA, and complete your American Sailing Association Basic Sailing through Bareboat Cruising Certifications during a Saturday 1pm - Friday 1pm liveaboard week exploring the spectacular San Juan Islands. Spring tuition only \$1685, including food! (Air SFO-BLI-SFO approx. \$425)

*No experience like this for the price in the SF Bay Area!*



**CHARTER**  
Exceptional Yachts  
from 29 to 57 feet

Over 35 Years of Sailing Excellence  
We certify more Bareboat Skippers than any other school on the West Coast!

360-671-8339 • www.sanjuansailing.com

License #0E32738

**TWIN RIVERS**  
MARINE INSURANCE  
AGENCY, INC.  
"Your Marine Insurance Specialists"

Meet the team  
at Booth H1

7 Marina Plaza • Antioch, CA 94509 • At The Antioch Marina  
Latitude 38° 01' 10" N - Longitude 121° 49' 10" W - Buoy 4 Red - On the San Joaquin River

- Shop Your Renewal & Save - Flexible Survey Requirements
- Broad Navigation Areas • Liveaboards • Classic Yacht Coverage
- Agreed Value Policies • Fuel Spill Liability • Get a Quote Online



Your Twin Rivers Policy  
Comes With an Agent



West Coast • Hawaii  
Mexico • East Coast

Marine Insurance made simple, affordable and effective.

**www.BoatInsuranceOnly.com (800) 259-5701**

Years of unbeatable experience to match your needs to the right product.

REPRESENTING...



**Commercial Marine Insurance • CALL DOUG for a QUOTE**

- Marinas/Resorts
- Dealers/Brokers
- Charter/Tour/Fishing Vessels
- Boat Builders
- Marine Products Manufacturers
- Yacht Clubs
- Vessel Repair Facilities
- Rental Vessels/Workboats
- Marine Contractors
- Wholesalers & Distributors

**Doug Rader Your Commercial Marine Specialist • Direct 209-334-2858**



# Meet the Speakers



## Gavin Allwright

Gavin was one of the founding members of IWSA, serving as Secretary General for the last five years. Prior to that, Gavin worked as the Commercial Director for the Greenheart project, designing a zero-emissions cargo vessel for LDC regions and as an advisor for a sustainable shipping network in the South Pacific. He currently sits on the International Maritime Organisation (IMO) Maritime Technology Cooperation Centres (MTCC) stakeholder's advisory committee and is also on the board of the World Wind Energy Association (WWEA). Gavin holds a Master's degree in Sustainable Development, specialising in small scale sustainable shipping and logistics in developing countries and is a visiting lecturer at the UN World Maritime University, Malmo, Sweden. He regularly contributes to policy briefs and was an expert reviewer for the recent IPCC Special Report on 1.5C Global Warming.



## Richard Anderson

Richard and his wife Devon are experienced cruising sailors who have sailed from Alaska to El Salvador with their two daughters aboard SV Mobert. With a career spanning over 22 years of technical consulting at the small business and enterprise level, Richard has taken Sea-Tech to the next level with small business and enterprise solutions, as well as solutions for travelers from all walks of life who are looking for a trusted advisor for communication, navigation, and weather hardware, software, and technical.



## Adrian Baudrimont, Vivian Matuk, & Wendy Kordesch

Vivian Matuk is the California State Parks Division of Boating and Waterways and the California Coastal Commission's Environmental Boating Program Coordinator and Clean Vessel Act Education and Outreach Program Manager. Vivian manages the statewide Boating Clean and Green program led by DBW and implemented in partnership with CCC.



Adrien Baudrimont is an Environmental Planner with the San Francisco Estuary Partnership and the Clean Vessel Act Program Manager. This program, funded by the California Division of Boating and Waterways, works with marinas, boaters, and other stakeholders to increase awareness of the effects of sewage discharge. In parallel, Adrien manages nature-based shoreline infrastructure projects, including the Oro Loma Experimental Horizontal Levee. Previously, Adrien managed the San Francisco Creek Mouth Assessment Project, as well as the SFEP Small Grant Program before taking an active role in the Boater Outreach and Education Program. Before joining the Partnership, Adrien worked for several cities in Europe as a consultant in urban planning and sustainable development. Adrien has a Master in Geography and a Master in Urban Planning from the University of Paris Sorbonne.



## Charlie Bogue

Charlie Bogue grew up sailing with his family on the San Francisco Bay and eventually racing regionally. Professionally, he has built a career in business development and marketing strategy. Currently, Charlie is involved in strategic planning and market development for WWT, while also serving as the Charter & Marketing Director of Adventure Cat Sailing Charters which operates out of Pier 39.

## Richard Boren

Rich Boren has cruised and lived aboard for 11yrs with his family in the Sea of Cortez and used his understanding of the cruising lifestyle to help cruisers understand their water maker and cruising gear choices.



## Jennifer Boyle

Jen made the leap from desk job to boat builder, learned the difference between a band saw and a jig saw, isn't scared to replace thru hulls (ok, maybe it still makes her a tiny bit nervous) and believes if she can get her hands dirty and fix boats, anyone can!



## Kate Burgess

Katie Burgess has been working in the solar industry for over a decade, and recently established Sun Powered Yachts, to bring SunPower® high efficiency flexible solar panels to the marine market. She combines her sailing and solar knowledge to inform and inspire yacht owners to go solar aboard. She lives off the grid in Hawaii and, when not working, she is sailing aboard their Dufour 382 with her husband and two young girls.



## Sarah & Will Curry

Will & Sarah Curry bought their first boat in Mexico in 2012. After Will showed Sarah the ropes, they sailed into the sunset-west, across the incredible South Pacific. SV Hydroquest sold in Australia, but they knew they were addicted to the lifestyle... On to Boat #2! After outfitting their Jeanneau 43 in Vancouver, they set off cruising again in 2017-albeit at a slower pace.





### Janet Glenny

Janet Glenny is an emergency medicine/trauma registered nurse who currently works in an emergency room setting. She has cruised on her IP38 for over 18 years sailing halfway around the globe.



### Robert & Virginia Gleser

Virginia and Robert Gleser have just completed their 19th year of cruising their Islander Freeport 40, ketch, "Harmony," from San Francisco to Mexico and beyond to Latin American and Ecuador. They have been married for 47 years, and have raised 8 children. When their last child went off to college in 2000, they sold their business and headed out the Golden Gate and turned left to cruise in warm climes. Virginia has written the book entitled "Harmony on the High Seas, When Your Mate Becomes Your Matey," that has earned rave reviews from the cruising community.



### Mike Gunning

After careers in computers and banking and raising his family, Mike returned to his early love of sailing. For the last 8 years he has been the voice of Electric Yacht and proponent of "Clean Green Quiet" electric propulsion. Mike has participated in numerous boat shows and been involved with over 400 yacht conversion. Mike has owned a number of sailboats including Catalina's, Ericson's, a Newport and Peterson and currently restoring a vintage Carl Alberg Pearson.



### Leigh Hunt

Leigh Hunt is the CEO of Modern Sailing School and Club. Modern has been running an active Global Destinations program since 1998, and has lead flotillas in many of the most beautiful sailing destinations in the world. With flotilla group charters in the Caribbean Windward Islands, Croatia, Tahiti, and Greece in the last three years Leigh can share the highlights of his experiences and help you plan for your next destination sail!



### Ken Johnson

Ken Johnson is a retired EMT/Fire Chief and owner of North Coast Fire & EMS Training. He has extensive experience in the application of emergency medical skills in adverse and remote settings. Ken is a certified instructor for ASHI, State Fire, and the National Association of Search and Rescue (NASAR).



### Dan Leininger

Maritime Institute. He is a retired Naval Officer, and currently holds a Master 100GT Near Coastal License. Dan runs an office in Alameda, CA where he provides U. S. Coast Guard licensing instruction and testing. Dan has held several positions on the San Francisco waterfront including Harbor Master and Director of sailing programs. Dan is the Executive Director of America True, and a Board Member at the Alameda Community Sailing Center.



### Eric Macklin

Eric Macklin became hooked on sailing as a teenager through a Sea Scout program based in Southport, Connecticut. For more than 25 years, he's been sharing his passion as a profession by matching sailors with the right boat and ownership solution for their needs.



### Richard (Dick) Markie

Dick started cruising Mexico in 1990 after selling his business and leaving California. He spent several years cruising all of the Mexican coast. He opened and ran the Marina Mazatlan for many years before moving to Nuevo Vallarta where he was charged with the designing and managing of Paradise Village Marina.



### Kira B. Maixner

Captain Kira Maixner has her OUPV Captains License. She is a sailing instructor at Modern Sailing School and Club and crew on USA 76 - a retired America's Cup Yacht docked at Pier 39. While she enjoys teaching people from all walks of life, she is most passionate when it comes to women and sailing. She strives to create an inclusive and supportive community encouraging women to take the helm.



### McCaleb & McIntosh

The McCalebs and the McIntoshes each have more than 45 years of sailing under their belts. Their sailing resumes include having sailed thousands of miles in the South Pacific, the Caribbean, and, more to the point of these seminars, the west coasts of North and Central America. In the process, they both have made multiple trips up and down the coasts of California and Mexico, including several Baja Ha Ha's and Baja Bashes. These sailors will not only guide you down the Pacific coast, but can answer any land-based questions you have about roads, airport connections, hotels, shopping - to ensure you get the most out of your trips south of the border, for either extended cruising or commuter cruising.



## WEST COAST DEBUT HALLBERG-RASSY 340

Pacific Sail and Power Boat Show, April 4-7



FAST, EASY AND COMFORTABLE SAILING  
LONG WATERLINE, TWIN RUDDERS, MODERN SAILPLAN, INTEGRAL BOWSPRIT  
UNMATCHED HALLBERG-RASSY QUALITY AND STYLE



**SwiftsureYachts**

206.378.1110  
swiftsureyachts.com  
info@swiftsureyachts.com  
facebook.com/swiftsureyachts

## 2019 Mahina Offshore Cruising Seminar



Technical guru **Nigel Calder** joins **John & Amanda Neal** to co-present 8 hours of detailed instruction with PowerPoint illustration that follow the 260-page Offshore Cruising Companion course book.

**Saturday April 6, 8:30-5:30**  
**Pacific Boat Show, Richmond**

This intensive, exciting and interactive seminar features 18 topics including Choosing the Right Boat & Equipment, Diesel Engines, Storm Avoidance and Survival, Safety & Medical Concerns, Communications, Anchoring, Galley Essentials, Managing Your Escape, Piracy & Security, & Worldwide Cruising Routes.

Seven months a year John and Amanda conduct sail-training expeditions worldwide aboard their Hallberg-Rassy 46, Mahina Tiare. This seminar incorporates the knowledge gained from their combined 712,000 sea miles and 85 years' experience.

Details and registration at  
**www.mahina.com**

# Meet the Speakers



### Blane McClish

Blane McClish is an Offshore Instructor for Modern Sailing. Blane started sailing as a young child in San Francisco and Monterey Bays, and on inland lakes in California. Most of his sailing career has been focused on racing, but in the last few years has switched his primary focus over to offshore sailing and voyaging.



### Michael Moradzadeh

Michael Moradzadeh is Commodore of the Pacific Cup Yacht Club for the 2020 race. He has completed ten and a half crossings of the Pacific, including eight Pacific Cups and one TransPac. He is a member of the US Sailing Safety at Sea Committee, the Cruising Club of America, the Royal Ocean Racing Club, and the Corinthian and Saint Francis Yacht Clubs. He will be the 2019 TransPac in July aboard his Santa Cruz 50 Oaxaca.



### Norm Pennington

Norm has been an avid boater for 35 years in both power and sail. His boating experience is primarily in power boating in SF Bay and the Delta and has been boating in the Caribbean and the Pacific Northwest. He has been a member of the US Power Squadrons for as many years.



### Tom Trimmer

Tom Trimmer is the founder and owner of Custom Marine Products, a company specializing in marine solar systems for the cruising sailor. Mr. Trimmer has been a cruising sailor for more than 20 years and understands that the number one challenge to comfortable cruising is the availability of electrical power. His company has helped many sailors analyze their power requirements, evaluate solar products available and design systems to meet their needs. A graduate mechanical/electrical engineer from the University of Michigan, Mr. Trimmer has been involved in the marine industry for over 20 years. He and his wife cruise the Great Lakes for six weeks each summer testing and evaluating solar equipment. (Somebody has to do it.)



### Christine Weaver

Christine is a California native. She grew up around The Bay, graduated from San Francisco State University and learned to sail in El Toros at age 12. She has been actively racing and cruising since 1992, shortly after joining the staff of Latitude 38. She is now the Editor of the Racing Sheet and other racing-related features in the Latitude 38 magazine. She also writes the racing reports in 'Electronic Latitude. When not racing, she continues to be out and about as an avid cruiser. Christine co-founded the Delta Doo Dah cruising rally in 2009.



H&M MARINE PRESENTS

*Chris* ★ *Craft*®

**In  
Stock**

Corsair 34



Ask about special boat show pricing.

**In  
Stock**

Catalina 30



**In  
Stock**

Launch 27



See the new models  
at our Sausalito  
showroom and

**THE PACIFIC  
SAIL & POWER  
BOAT SHOW**

**APRIL 4-7**

Visit us at the in-water  
display as well as the  
Craneway Pavilion  
in Booth K2



400 Harbor Dr., Sausalito, CA 94965

**(415) 332-3507**

[www.handmmarine.com](http://www.handmmarine.com) • [tahoe@handmmarine.com](mailto:tahoe@handmmarine.com)

# Cutting Edge

## **NEW** Offshore Knife

- Lightweight
- One Hand Opening
- Straight or Serrated Locking Blade
- Superior Blade Sharpness And Durability



wichardamerica.com/ | tel: (401) 683-5055  
sales@wichard-sparcraft.com

# Let's Party

## Celebrate TGIF Sponsored by *Latitude 38*

FRIDAY, APRIL 5 AT 6 P.M.

Join the Pacific Sail & Power Boat Show exhibitors at a Friday evening show tradition. Kick back and enjoy a party for one and all at Assemble Restaurant in the Craneway Pavilion. Plan to come to the show in the afternoon and then stay for the party. Attendees must be in the show by 5:30 p.m. in order to join the festivities. This lively evening with show exhibitors and sponsors promises to be a fun night to start your weekend with a bang.



## Don't Miss the Cruisers Party

SATURDAY, APRIL 6, AT 6 P.M.

More than a dozen years ago, Bob Bitchin and Jody of Cruising Outpost created the Cruisers' Party at the then Strictly Sail Pacific. Cruisers come from all over to enjoy this annual celebration of the cruising lifestyle. Eric Stone will be live and in concert, while you enjoy a slice of pizza and a beer or glass of wine.

There will be great raffle prizes, including PureWater+ by Forespar, Canberra Gel gift box, Mantus Anchors, and many more. Proceeds go to The Educational Tall Ship Foundation Project S/V Matthew Turner, being built in Sausalito, CA.

The event is free and open to all show attendees and exhibitors. It starts when the show closes at 6 p.m. You must be in the show prior to closing to attend. Be part of the biggest, most fun cruising party of the year.



# UNPLUG • READ • RELAX

You are invited to attend the Friday night, April 5th party with Latitude 38 at the Pacific Sail & Power Boat Show.



**Around the buoys or around the globe, Latitude 38 is where West Coast sailors connect.**

In Print

Online

In Person

On the Water



Pick up a copy



Subscribe to 'Electronic Latitude,' our 3 times a week online newsletter



Sail with Latitude 38 events:  
Crew Party, Baja Ha-Ha, Delta Doo Dah, Summer Sailstice, Pacific Puddle Jump



Sail somewhere — and share the story with Latitude 38

**Find the magazine, find the news, find your friends at:**

**Summer Sailstice**  
Booth E 10

**www.latitude38.com**  
*We Go Where the Wind Blows*



**Latitude 38**  
Visit our Booth C 1

# Exhibitors

Please check our website at [www.pacificboatshow.com](http://www.pacificboatshow.com)  
for updated exhibitor listings, boats on display, and seminar information.

## **727 Sailbags**

Craneway Pavilion F16

## **AB Marine**

Craneway Pavilion K3

## **Aero and Marine Tax Professionals**

Craneway Pavilion D13

## **Afterguard Sailing Academy**

Craneway Pavilion H16

## **Air Head Toilet, EOS Design**

Craneway Pavilion J5

## **Almar Marinas**

Craneway Pavilion D3

## **American Battery Company**

Craneway Pavilion C4

## **Antares Yachts**

In-Water Display

## **Atomic Tuna Yachts**

Craneway Pavilion B4

## **Axopar Yachts**

In-Water Display

## **B&G Navico**

Craneway Pavilion E11

## **Bainbridge International**

Craneway Pavilion C15

## **Barracuda Yachts**

In-Water Display

## **Bay Area Association of Disabled Sailors (BAADS)**

Marina Exhibition Tent T11

## **Beneteau Yachts**

In-Water Display

## **Boatswain's Locker**

Craneway Pavilion A6

## **Boston Whalers**

In-Water Display

## **Boye Knives**

Craneway Pavilion C7

## **Brickyard Cove Marina**

Craneway Pavilion G4

## **California State Parks Div. of Boating & Waterways**

Craneway Pavilion G8

## **California Yacht Sales**

In Water Display

## **Canvas Works**

Craneway Pavilion I2

## **Cantius Yachts**

In-Water Display

## **Cape Hatteras Marine, Inc.**

Craneway Pavilion I15

## **Carefree Boat Club of San Francisco Bay**

Craneway Pavilion C6

## **Catalina Yachts**

In-Water Display

## **Chris-Craft**

In-Water Display

## **City of Berkeley Marina**

Land Marina Exhibition T22

## **City Yachts**

In-Water Display

## **Click Heat Inc.**

Craneway Pavilion B3

## **Club Nautique**

Craneway Pavilion B6

## **CopperCoat USA, LLC**

Craneway Pavilion C14

## **Corsair Trimaran**

In-Water Display

## **CPT Autopilot**

Craneway Pavilion G2

## **Cruising Outpost**

Craneway Pavilion M11

## **Cruise RO Water and Power**

Craneway Pavilion E1

## **Cruisers Yachts**

In-Water Display

## **Cruising Specialist**

In-Water Display

## **Cruising Yachts**

Craneway Pavilion F3

## **Cutco Cutlery**

Land Marina Exhibition T8

## **Dan Boater**

Craneway Pavilion G12

## **Delta Bay Marina**

Marina Exhibition Tent T7 Space

## **Delta Sailing School**

Craneway Pavilion E3

## **Doyle Sailmakers**

Craneway Pavilion J6

## **Dream Yacht Charter**

Craneway Pavilion B5 and B16

## **Dutchmar**

Craneway Pavilion D1

## **Easom Rigging and Racing/Marlow Ropes**

Craneway Pavilion B10

## **Electric Yacht**

Craneway Pavilion I16

## **Euro Marine Trading, Inc.**

Craneway Pavilion G3

## **Farallone Yacht Sales**

In-Water Display

## **Fiorentino Para Anchor**

Craneway Pavilion J4

## **Forespar**

Craneway Pavilion K5

## **Freedom Boat Club of Northern California**

Craneway Pavilion G15

## **Garhauer Marine**

Craneway Pavilion C8

## **Garmin USA**

Craneway Pavilion D16

## **Gillett Refrigeration and Air Conditioning**

Craneway Pavilion J13

## **H&M Marine Services/ Beta Marine West**

Craneway Pavilion K2  
and In-Water Display

## **Halberg-Rassy 340**

In-Water Display

## **Handcraft Mattress Co.**

Craneway Pavilion D7

## **Hanse Yachts**

In-Water Display

## **Helly Hansen**

Craneway Pavilion I1

## **Helms Yachts**

In-Water Display

## **Helmut's Marine**

Craneway Pavilion G1

## **Hydrovane International Marine**

Craneway Pavilion E15

## **HyperVent Marine**

Craneway Pavilion C7

## **Imtra Corporation**

Craneway Pavilion M7

## **Inflatable Sports Boats**

Craneway Pavilion N7

## **International Health Insurance**

Craneway Pavilion H3

## **IQ Technologies**

Craneway Pavilion F8

## **J/Boats**

In-Water Display

## **Jeanneau Yachts**

In-Water Display

## **JK3 Nautical Enterprises**

In-Water Display

## **Kanberra Group**

Craneway Pavilion N5

## **KKMI**

Land Bay Trail West BU1

## **La Paz Tourism Board**

Craneway Pavilion F10

## **Lagoon Yachts**

In-Water Display





# WAR

# WAR PAINT

BLACK WIDOW, THE KILLER SPEED COATING, IS THE SLICKEST, SMOOTHEST, FASTEST, HARDEST, MOST BURNISHABLE, MOST WINNING ANTIFOULING PAINT YOU CAN WEAPONIZE YOUR BOTTOM WITH. BLACK WIDOW IS THE HIGHEST



PERFORMING, MULTI-SEASON, DUAL BIOCIDES. POLISH IT TO A SUPER-EASY-TO-CLEAN, FRICTION-FREE, MIRROR-LIKE SHINE. BLACK WIDOW IS MORE THAN YOU COULD EVER WISH FOR IN A SUPER-FAST RACING FINISH. WEAR THE WAR PAINT. WIN THE WAR.

[pettitpaint.com](http://pettitpaint.com)

# Exhibitors *continued*

**Latitude 38 Media, LLC**

Craneway Pavilion C1

**Lee Sails of California**

Craneway Pavilion C9

**Lifeline Batteries**

Craneway Pavilion C4

**Live 2 Wake**

Craneway Pavilion K10

**Mantus Marine**

Craneway Pavilion K16

**Marina Bay Yacht Harbor**

Craneway Pavilion E14

**Marinas of Mexico Association**

Craneway Pavilion F12

**Mariner International Travel**

Craneway Pavilion E6

**Modern Sailing School & Club**

Craneway Pavilion C2

**Neptune Maps**

Craneway Pavilion F6

**New England Ropes**

Craneway Pavilion L5

**New Found Metals**

Craneway Pavilion I14

**North Sails San Francisco**

Craneway Pavilion F1

**Oakland Intl Maritime Ctr/Seafarers Ministry-Golde**

Land Marina Exhibition T17

**Oakland Yacht Club**

Craneway Pavilion D5

**Oceanic Yacht Sales**

In-Water Display

**Oceanmax**

Craneway Pavilion G11

**OCSC Sailing**

Craneway Pavilion B7

**Outboard Motor Shop**

In-Water Display

**Owl Harbor Marina**

Craneway Pavilion E4

**Pantaenius America Ltd.**

Craneway Pavilion B1

**Paradise Village Beach Resort and Marina**

Craneway Pavilion G14

**Park Presidio Marine**

Craneway Pavilion H6

**Passage Nautical**

In-Water Display

**PNV Yacht Charters**

Craneway Pavilion E16

**Porta-Bote International**

Craneway Pavilion C16

**Princess Yachts**

In-Water Display

**Principal Financial Group**

Craneway Pavilion L11

**PYI Inc.**

Craneway Pavilion H15

**QM Travels**

Craneway Pavilion L8

**Quantum Sails**

Craneway Pavilion J1

**Recreation Publications**

Craneway Pavilion F9

**Richard Boland Yachts**

In-Water Display

**Richards Marine Marketing**

Craneway Pavilion H9

**Riviera Yachts**

In-Water Display

**Ronstan**

Craneway Pavilion N4

**RS21**

In-Water Display

**Rubicon Yachts**

In-Water Display

**Rum Reggae, Inc.**

Craneway Pavilion A1

**Sail California**

In-Water Display

**Sailology, LLC**

Craneway Pavilion E1

**SailStep, LLC**

Craneway Pavilion C5

**SailTime San Francisco**

Land Marina Exhibition BU33

**Samson Ropes**

Craneway Pavilion K9

**San Francisco Model Yacht Club**

Land Marina Exhibition T18

**San Juan Sailing**

Craneway Pavilion F5

**Scanmar International**

Craneway Pavilion K1

**Sea Bags**

Craneway Pavilion B8

**Sea-Tech Systems**

Craneway Pavilion I12

**Seahorse Marine**

In-Water Display

**Silver Seas Yachts**

In-Water Display

**SmartPlug Systems, LLC**

Craneway Pavilion N6

**Southern California Marine Enterprises**

Craneway Pavilion H5

**Spaulding Marine Center**

Craneway Pavilion J10

**Spinlock**

Craneway Pavilion M1

**Star Marine Electronics, Inc.**

Craneway Pavilion F15

**Sterling Associates**

Craneway Pavilion G6

**Summer Sailstice**

Craneway Pavilion E10

**Sun Powered Yachts, LLC**

Craneway Pavilion D4

**Sure Marine Service, Inc.**

Craneway Pavilion K14

**Svensen's Marine**

Craneway Pavilion N3

**Swedish Marine**

Craneway Pavilion H10

**Swiftsure Yachts**

In-Water Display

**ThermaDerm**

Craneway Pavilion E9

**Thunderstruck Motors**

Craneway Pavilion G16

**Tiara Yachts**

In-Water Display

**Tradewinds****Sailing School**

Craneway Pavilion E12

**Training Resources Maritime Institute**

Craneway Pavilion L14

**Trident Funding, LLC**

Craneway Pavilion B2

**Twin Rivers Marine Insurance Agency, Inc.**

Craneway Pavilion H1

**ugo wear**

Craneway Pavilion G15

**United Yacht Sales**

In-Water Display

**Vallejo Yacht Club**

Craneway Pavilion J14

**Ventura Sport Boats**

In-Water Display

**Viadana US**

Craneway Pavilion J16

**Viking Life-Saving Equipment (America)**

Craneway Pavilion A2

**Visit Richmond, CA**

Craneway Pavilion E8

**Wakespeed Offshore**

Craneway Pavilion K4

**Weather Routing, Inc.**

Craneway Pavilion L16

**West Coast Sailing**

Craneway Pavilion I6

**West Marine**

Craneway Pavilion D10

**Western Marine Marketing, Inc. (Pettit Paint)**

Craneway Pavilion B11

**Wind+Wing Technologies, Inc.**

Land Marina Exhibition T27





## Excellence in Design and Engineering

Utilizing today's technology for tomorrow's performance. All of our lines are competition tested to the highest standards using the best technology and fiber.

**Others make line, we make line perform.**

T: 800-333-6679 | E: [neropes@neropes.com](mailto:neropes@neropes.com) | [www.neropes.com](http://www.neropes.com)






## Oakland Yacht Club

**See us at the  
Pacific Sail and  
Power Boat Show  
April 4-7**

**Located on the "ALAMEDA RIVIERA" - Best WEATHER on the Bay**  
Active Cruising and Racing Programs and easy access to Estuary for Paddle Sports  
Special Events at the Club, every month!  
Music & Dancing, Weekly Dinners, Education Series, Wine Maker's Dinner,  
**CELEBRATING OVER 100 YEARS OF BOATING TRADITION**

## Oakland Yacht Club

**In Alameda, CA**  
1101 PACIFIC MARINA  
(510) 522-6868  
[www.oaklandyachtclub.com](http://www.oaklandyachtclub.com)  
[membership@oaklandyachtclub.com](mailto:membership@oaklandyachtclub.com)



# BOAT LOANS

*from*



**TRIDENT FUNDING**

*Specialists in Marine Finance*

*"a fresh approach from people you can trust"*

**See Us At Booth B2**



**PACIFIC  
SAIL & POWER  
BOAT SHOW**

**Richmond - Marina Bay • April 4-7**  
*Please call or stop by for a quote*  
**JOAN BURLEIGH**  
**(510) 749-0050 • (800) 690-7770**

Loans will be arranged or made pursuant to a California Finance  
Lenders License #605 1871.

# The Venue



## Craneway Pavilion

1414 Harbour Way South, Richmond, CA

## Marina Bay Yacht Harbor

1340 Marina Way South, Richmond, CA

## Location, Location, Location

In the heart of the East Bay and convenient to the 580 freeway – 10 minutes from Berkeley, five minutes from the Richmond/San Rafael Bridge, and 15 minutes from the San Francisco Bay Bridge.

## Parking

Craneway Pavilion has 1,200 private and secure parking spots. Craneway Pavilion is respectful of its neighbors and, as a guest of the Craneway we extend this obligation to you as well. Please do not park in nearby business parks, neighborhoods or residential parking lots in the area. Drive to Craneway and follow the signs to safe secure parking.

## Nearest Major Airports

Oakland/OAK 22.5 miles, 20-30 minutes per traffic and San Francisco/SFO 27 miles, 30-60 minutes per traffic.

## Explore Local Restaurants and Brew Pubs

See [www.visitrichmondca.com](http://www.visitrichmondca.com)



# UBI MAIOR

## ITALIA

# JIBER®

THE FIRST JIB-FURLER WITHOUT FOILS

REDUCED DRAG AND WEIGHT

DISCONTINUOUS LINE OPTION

IMPROVED SAFETY

REEFED

# REWIND

THE FIRST RATCHETING FURLER FOR HEAD SAILS

**EURO MARINE**  
Trading, Inc.

62 Halsey Street, Unit M,  
Newport, RI 02840  
[www.euromarinetrading.com](http://www.euromarinetrading.com)  
[info@euromarinetrading.com](mailto:info@euromarinetrading.com)  
 Tel: 401-849-0060/800-222-7712  
 Fax: (401)849-3230

Emirates TEAM  
NEW ZEALAND

[WWW.UBIMAIORITALIA.COM](http://WWW.UBIMAIORITALIA.COM)



# MARINA BAY YACHT HARBOR

**HOMEPORT FOR THE  
Pacific Sail and Power Boat Show**  
*Now with ferry service between  
Richmond & San Francisco*



**PACIFIC  
SAIL & POWER  
BOAT SHOW**

**APRIL 4-7**

***Deep Water Harbor  
– Easy Access by  
Land or Sea!***



**We have a deep slip for you.**



**One of the deepest marinas  
on San Francisco Bay:  
12-ft depth minimum!**

**(510) 236-1013**

**[www.MarinaBayYachtHarbor.com](http://www.MarinaBayYachtHarbor.com)**

# Travel & Contacts

## Official Hotel of the 2019 Pacific Sail & Power Boat Show

### Driving

#### From Oakland, Alameda, San Jose:

Take 880 Northbound to 580 Westbound. Continue on 580 West towards Pt. Richmond. Exit Marina Bay Parkway, and turn left to go over the freeway. Stay on Marina Bay Parkway until you reach Regatta Blvd. Turn right on Regatta Blvd. Follow it to Marina Way South where you turn left. Then turn right on Hall Avenue, then left on Harbour Way South and follow it to the waterfront.

#### From San Francisco, Berkeley:

Take 80 Eastbound to 580 Westbound. Exit Marina Bay Parkway and turn left to go over the freeway. Stay on Marina Bay Parkway until you reach Regatta Blvd. Turn right on Regatta Blvd. Follow it to Marina Way South where you turn left. Then turn right on Hall Avenue, then left on Harbour Way South and follow it to the waterfront.

#### From Marin:

Take the Richmond Bridge/580 Eastbound. Exit Cutting Blvd. Turn left onto Cutting Blvd. Make a right onto Harbour Way South and follow it to the waterfront.

#### From Sacramento:

Take 80 Westbound. Exit Cutting Blvd. Turn right onto Cutting Blvd. Turn left onto Harbour Way South and follow it to the waterfront.

### By Water

San Francisco Bay Ferry for information  
please visit: [www.sanfranciscobayferry.com](http://www.sanfranciscobayferry.com)  
Contact Marina Bay Yacht Harbor at (510) 236-1013.

### Public Transit

AC Transit (Alameda and Contra Costa Counties bus service connecting the East Bay and SF) 511  
Airport Transportation 511  
Amtrak Passenger Trains (800) 872-7245

BART (Bay Area Rapid Transit connecting San Francisco, Daly City, SFO and 25 East Bay cities) (650) 992-2278 or (510) 465-2278

Golden Gate Transit (415) 455-2000  
Muni (SF Bus and Cable Car) 511 or (415) 673-6864  
Regional Transportation Information 511



Courtyard by Marriott® Oakland Emeryville  
5555 Shellmound Street, Emeryville, CA 94608

800-828-4720

[www.marriott.com](http://www.marriott.com)

Just over the Bay Bridge from San Francisco, 10 minutes from Berkeley and just north of Oakland, the Courtyard by Marriott® Oakland Emeryville is centrally located within the Bay Area, making it the perfect home base.

Book your group rate for the show at the website or phone number above and use booking code: Pacific Sail & Power 2019

### Additional Convenient Hotels

Berkeley City Club, Berkeley	(510) 848-7800
Claremont Club & Spa, Berkeley	(510) 843-3000
Courtyard Marriott, Larkspur	(415) 925-1800
DoubleTree by Hilton, Berkeley	(510) 548-7920
Holiday Inn Express, Berkeley	(510) 548-1700
Hotel Durant, Berkeley	(510) 845-8981
Hotel Mac, Point Richmond	(510) 233-0576
Hotel Shattuck Plaza, Berkeley	(510) 845-7300
Extended Stay, San Rafael	(415) 451-1887



# SILVER SEAS YACHTS



a SkipperBud's affiliate



***Your Exclusive Dealer For  
These World-Class Brands***



**More than 20 NEW yachts in-stock.  
More than 250 pre-owned yachts available.**

*Located at: Clipper Yacht Harbor • 300 Harbor Drive, Sausalito, CA  
Also in: Newport Beach • San Diego • Seattle • Scottsdale  
[www.SilverSeasYachts.com](http://www.SilverSeasYachts.com) • 415-367-4022*



## Short-handed Offshore Speedster

The NEW J/99 (32.6') combines great sailing performance with belowdecks comfort in a boat that can be sailed by one or two people. The deck layout and rig are optimized for easy handling, incorporating the latest developments from the J/121 (Bermuda Race winner) and the J/112E (ORC/IRC World Champion). With racing participation trending towards adventure-style, open-course events where straight-line speed in all conditions is rewarded, here's a new boat created for just such a purpose. Call us at +1 401-846-8410 to schedule a J/99 demo sail this spring!



**See the J/99 at the Pacific Sail & Power Boat Show in Richmond**