

• BOAT SHOW GUIDE •



PACIFIC SAIL & POWER BOAT SHOW

and Marine Sports Expo

April 19-22, 2018

Craneway Pavilion and Marina Bay Yacht Harbor, Richmond, CA

PacificBoatShow.com

Discover **Sailing**
The Ultimate Adventure

Produced by:



@PacificSailandPowerBoatShow



@PacificBoatShow



@PacificBoatShow



INSIDE:

- Seminars
- New Products
- Boat Showcase
- Show Highlights

**Svendsen's Marine + Bay Industrial Supply,
now together as**



**SVENDSEN'S MARINE
& INDUSTRIAL SUPPLY**

BAY MARITIME GROUP

**The largest selection of marine
products in the Bay Area**

Buy the gear...

**Find us both at the back of the
Craneway Pavilion**

Get great deals on items like:

**Furlers • Winches • Watermakers •
Thrusters • Solar Panels • Foul Weather
Gear • Refrigeration • Anchors • Marine
Heads • Life Jackets • Technical Clothing**



510-522-2886 • www.svendsens.com

Svendsen's Boat Works + Bay Marine Boatworks,
now together as



**SVENDSEN'S
BAY MARINE**

BAY MARITIME GROUP

**The premier West Coast
boatyard**
...meet the installers!



**Enter for a chance to
win a FREE bottom
painting package!**
See booth for details

510-237-0140 • sbm.baymaritime.com

Pacific Sail & Power Boat Show and Marine Sports Expo

April 19-22 • Craneway Pavilion and Marina Bay Yacht Harbor, Richmond, CA

Location

In the historic Craneway Pavilion and Marina Bay Yacht Harbor in Richmond, CA. See pages 36-38 for accommodations, transportation, directions and parking details. No pets are allowed in the show. Only guide dogs, service dogs, or other animals individually trained to provide assistance to an individual with a disability are allowed.

Show Hours

Thursday, April 19 10 a.m. – 6 p.m.
Friday, April 20 10 a.m. – 6 p.m.
Saturday, April 21 10 a.m. – 6 p.m.
Sunday, April 22 10 a.m. – 5 p.m.

Admission

One-Day Adult Ticket \$18
Two-Day Adult Ticket (online only) \$28
Four-Day Pass (online only) \$48
Children 12 and younger Free
(must be accompanied by a paying adult)



 Join us on Facebook at
www.facebook.com/PacificSailandPowerBoatShow

Contents

Ticket Information/Show Hours	4
Sail America Welcome.....	6
New Boat Showcase	8-10
Cool Products	12-16
Show Highlights	18-20
Discover the On-the-Water Lifestyle	21
Advance Registration Seminars	22-24
Free Seminars	26-28
Let's Party	30
Exhibitor List	32-34
The Venue	36
Travel and Contacts	38
Accommodations	38

Skip The Lines – Purchase Tickets Online

Save time and money by purchasing your tickets online at www.pacificboatshow.com. Enter Promotional Code "SHOWGUIDE" and save \$2 on the ticket price.

Important Show Updates:

All information in this directory is accurate at the time of printing. Sail America may, however, make changes and substitutions to the show layout, event programming, seminars and exhibitor listing, etc. Please visit www.pacificboatshow.com for the latest show news and updates.



Follow us on Instagram @PacificBoatShow



Follow us on Twitter at @PacificBoatShow

Thank you to our sponsors



The All New Catalina 425

5 SERIES



The Catalina 425 may be just the right boat for you. The style is bold and contemporary, incorporating a large, comfortable cockpit and excellent ergonomics that are Catalina hallmarks.

This is a performance-oriented design with a solid lead keel and a hull form with long waterline and generous – but not exaggerated beam for stability and predictable, responsive handling.

The three-cabin interior is carefully detailed with lots of drawers and solid teak fiddles and trim, complemented with maple hull panels, creating a bright, yet warm and inviting, traditionally crafted atmosphere.

All of the famous 5 Series features are incorporated, including all L.E.D. lighting, 28" lifelines, and excellent access to all machinery and systems.

At Catalina, it's all about creating the best possible ownership experience. So if you're looking for a long-term relationship with a high-quality American brand, take a closer look at Catalina; the 425 may be just the right boat for your extended cruise.

Bay Area Dealer
Farallone Yachts
faralloneyachts.com

CE Category A



Catalina Yachts

CatalinaYachts.com

21200 Victory Blvd., Woodland Hills, CA 91367
7200 Bryan Dairy Rd., Largo, FL 33777



Official Show Guide

A Four-Day Boating Extravaganza!

Welcome to the 2018 Pacific Sail & Power Boat Show in Richmond. The show is in its third year here at the Craneway Pavilion and Marina Bay Yacht Harbor, and we're excited to be back in a venue and in a city that has always extended such a warm welcome to us and to all of you.



KATIE KELLY

The footprint of our show is extensive with lots to see and do in every corner. In the Craneway, please visit our exhibitors, who are here to share their expertise with you on everything from anchors to hardware to the latest gear to sails and more. Take a few minutes to stop and talk with them — they would love to hear what you have to say and to share their wisdom and experience. The in-water portion of the show is a quick walk down the San Francisco Bay Trail to the Marina Bay Yacht Harbor. Along the way you'll find entertainment and activities for all ages. Once at the docks, you'll find the Marina Tent full of exhibitors and docks full of sailboats and powerboats. Slip off your shoes, step aboard the many boats on display and enjoy a visit and conversation with the exhibitors.

I hope you can plan to spend the entire day with us, as there is a lot to see and do. Not only do we have a great show full of terrific exhibitors, but we have food trucks and vendors to tempt your culinary tastes as well as a line-up of special events that will add enjoyment to each of your days.

A tremendous team has come together to produce the show again this year. Thank you to the exhibitors, sponsors, vendors and to you for supporting the show and the industry. Sailing and boating fosters a camaraderie that is contagious — isn't it always fun to spend the day talking to others who love something as much as you do?

Welcome to the show. I hope you enjoy your visit.

Warm regards,

A handwritten signature in black ink that reads "K Kelly".

Katie Kelly

Sail America Association Manager



Produced by



23rd Pacific Sail & Power Boat Show

Association Manager

Katie Kelly

Sales Manager

Sara Watson

Operations Manager

Jorgen Bateman

Show Office Support

Stephanie Grove

Seminar Coordinator

Michelle Umberger

Discover Sailing Coordinator

Jorgen Bateman

Finance Manager

Kayce Florio

Show Guide Published by

Latitude 38 Media

We Go Where the Wind Blows

www.latitude38.com



SCIENCE STYLE STAMINA

Ammonite winner of the
2018 Millennium Cup

Doyle's reputation for impeccable attention to engineering detail and construction quality has made them the sailmaker of choice for so many of the world's most spectacular superyachts.

100% built by sailors for sailors

www.doylesails.com



New Boat Showcase

See these boats and more at the show dock.



Swift Trawler 35

See her at Passage Nautical.



Beneteau 51.1

See her at Passage Nautical.



Lagoon 450

See her at Passage Nautical.



J/88

See her at the Sail California display.



Axopar 37

See her at the JK3 display.



Tiara

See the Tiara at the Silver Seas display.



Coot

See her at the Seahorse Marine display.



Absolute 50

See her at the Seanet display.



Cruisers

See the Cruisers at the Silver Seas display.

Visit the show dock to view a great selection of sail and powerboats.



PASSAGE
NAUTICAL
ENTERPRISES

Point Richmond (510) 236-2633 / Oakland (510) 864-3000 / PassageNautical.com

INTRODUCING THE
OCEANIS 38.1

TOUR THE BENETEAU
POWER AND SAILING YACHTS
AT PACIFIC SAIL AND POWER BOAT SHOW
APRIL 19-22

OCEANIS 31

OCEANIS 55

SWIFT TRAWLER 34

OCEANIS 38

SENSE 50

OCEANIS 45

BARRACUDA 7

OCEANIS 35


BENETEAU
AUTHORIZED DEALER

New Boat Showcase *continued*

See these boats and more at the show dock.



Hanse 588

See her at the JK3 display.



Dehler 46

See her at the JK3 display.



Jeanneau 519

See her at the Cruising Specialists display.



Jeanneau 440

See her at the Cruising Specialists display.



Leader 33

See her at the Cruising Specialists display.



Catalina 425

See her at the Farallone Yachts display.



Corsair

See her at the Helms Yachts display.



RS Zest

See her at the West Coast Sailing display.



Blue Jacket 40

See her at the Island Packet display.



New J/1125E

Breakthrough Sailing Since 1977



J/24 Launched 1977



J/35 Launched 1983



J/105 Launched 1991

The Joy of Sailing

It's a feeling that comes from how a boat responds to wind, water and you.

Before you make a decision on your next boat, we recommend you experience the pure pleasure of sailing a J/Boat.

Raced, cruised, weekendened and enjoyed by families the world over since 1977.

See us at the Pacific Sail & Power Boat Show for a test sail.

www.jboats.com

Better Sailboats for people who love sailing.

SAIL *California*

(510) 523-8500

www.sailcal.com

Cool Products

The Pacific Sail & Power Boat Show is pleased to feature the following products from some of our exhibitors. Please visit their booths and experience them for yourself! For a complete list of products at the Pacific Sail & Power Boat Show, see the show website at www.pacificboatshow.com.

Live 2 Wake

NON-SKID PRODUCTS

Live 2 Wake is the Certified Installer for Genuine Seadek Marine Non-Skid products. On display will be some of their latest color introductions as well as some of the new Tri-Color combination options. *Live 2 Wake is in Craneway Booth B8 - visit to learn more!*



Boye Knives

HANDCRAFTED GALLEY/KITCHEN CUTLERY

Boye Knives has added some beautiful handcrafted galley/kitchen cutlery to their line of boat knives, and they will be on display at their booth at the show. *Visit Boye Knives in Craneway Booth C7 to get yours!*



Inflatable Sport Boats

PREMIUM INFLATABLE SUP

Inflatable Stand Up Paddle Board is a premium inflatable SUP for the all-around rider. Double reinforced drop stitch material allows the board to handle up to 15 PSI making it rock hard and incredibly comparable to a wooden hard longboard. *Visit Inflatable Sport Boats at the Marina Exhibition Tent, Booth T19, to get yours!*



Viadana

ITALIAN SAILBOAT COMPONENTS

Viadana is a family-owned Italian sailboat component manufacturer that has been in business in Bellano, Italy since 1961. *See Viadana in Craneway Booth J16 to learn more!*



Neutrino

POWER DISTRIBUTION AND CONTROL SYSTEM

Neutrino is a patent pending, USA made power distribution and control system for 12V DC system, consisting of a compact, ruggedized and waterproof distribution module and smartphone applications using Bluetooth connectivity.

Visit Arboreal System in Craneway Booth B4 or get more information about Neutrino at www.neutrinoblackbox.com



AB Marine

MOONLIGHT HATCHES

AB Marine will have the new Single speed GORI 3-blade propeller being introduced at the show & the new Lowline powerboat Moonlight hatches & portlights from BSI. *See for yourself, and visit AB Marine in booth K3 at the Craneway!*





Hanse

675 / 588 / 575 / 548 / 455 / 418 / 388 / 348 / 315

New Model



588



588



588

New Model



388



388



388

Dehler

46 / 42 / 38 / 34



38



38



38

AXOPAR

37 / 28 / 24



37 AC



37 Suntop



37 SC

PACIFIC SAIL AND POWERBOAT SHOW

April 19-22 2018 Craneway Pavilion & Marina Bay Yacht Harbor - Richmond, CA

SAN DIEGO, CA
619-224-6200

NEWPORT BEACH, CA
949-675-8053

ALAMEDA, CA
510-227-2100

HOUSTON, TX
281-957-9788

SEATTLE, WA
206-258-6200

CONTACT
JK3 FOR
BOATSHOW
TICKETS

WWW.JK3YACHTS.COM
INFO@JK3YACHTS.COM

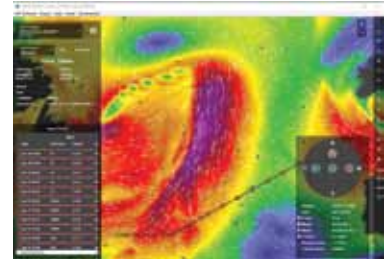
1070 Marina Village Parkway
Suite 109
ALAMEDA, CA 94501

Cool Products

WRI

SEAWEATHER ONLINE

WRI's upgraded Sea-Weather OnLine and brand-new OnBoard are two interactive software packages that enable fast access/viewing of weather and marine data with optimum route calculations. Visit WRI at the Craneway in Booth L16 to learn more!



SailStep

TEAK AND FIBERGLASS TOE-RAILS

Creaky knees making your sailboat feel taller every year? SailStep's award-winning boarding steps make docking safe and easy. Visit SailStep in booth C5 at the Craneway to learn more.



Helly Hansen

AEGIR H2 FLOW JACKET AND FOIL SAILING SHOE

Helly Hansen Aegir H2 Flow Jacket – Brand new insulated midlayer jacket is water repellent, built for smart layering while sailing offshore. Visit Helly Hansen in booth I1 at the Craneway to learn more!



Facnor

CONTINUOUS LINE FURLERS

Check out furling systems from Facnor, a worldwide leader in designing and manufacturing of superior furling systems. Visit Facnor at the Craneway Booth B9.



License #0E32738

TWIN RIVERS

MARINE INSURANCE AGENCY, INC.
"Your Marine Insurance Specialists"

7 Marina Plaza • Antioch, CA 94509 • At The Antioch Marina
Latitude 38° 01' 10" N – Longitude 121° 49' 10" W – Buoy 4 Red – On the San Joaquin River

- Shop Your Renewal & Save – Flexible Survey Requirements
- Broad Navigation Areas • Liveboards • Classic Yacht Coverage
- Agreed Value Policies • Fuel Spill Liability • Get a Quote Online

Your Twin Rivers Policy Comes with an Agent

West Coast • Hawaii
Mexico • East Coast

Marine Insurance made simple, affordable and effective.

www.BoatInsuranceOnly.com (800) 259-5701

Years of unbeatable experience to match your needs to the right product.

REPRESENTING...

Commercial Marine Insurance • CALL DOUG for a QUOTE

- Marinas/Resorts
- Dealers/Brokers
- Charter/Tour/Fishing Vessels
- Boat Builders
- Marine Products Manufacturers
- Yacht Clubs
- Vessel Repair Facilities
- Rental Vessels/Workboats
- Marine Contractors
- Wholesalers & Distributors

Doug Rader Your Commercial Marine Specialist • Direct 209-334-2858

Members:

100 Years of Innovation & Service From The Original Sailcloth Company

• sailcloth • furling systems • liferafts • safety • hydrogenerators • compasses • hardware •

www.bainbridgeintusa.com



Cruising Specialists

is delighted to announce its appointment as
the exclusive northern California dealer for



JEANNEAU

power and sailing yachts
including:

Sun Odyssey

319 . 349 . 419 . 440 . 479 . 490 . 519

Sun Odyssey Deck Saloon

41DS . 44DS

Sun Fast

3200 . 3600

Jeanneau Yacht

51 . 54 . 58 . 64

NC

695 . 795 . 895 . 9 . 33 . 36 . 40 . 46

Leader

6.5 . 7.5 . 9.0 . 10.5 . 30 . 33 . 36 . 40 . 46

Velasco

37F . 43F

Please visit the Jeanneau specialists at our new office located at

298 Harbor Drive, Sausalito, California 94965

www.CruisingSpecialists.net

800-343-SAIL (7245)

ADVANCED MAINSAIL MANAGEMENT

In-Boom Furling Engineered For Your Boat

- Nine Different Sizes & Models for Cats & Monohulls
- Multi-Factor Design Program Assures Fit
- Allows For Efficient Full Battened Sail Shape Unlike In-Mast Furlers
- Elegant Tapered Styling in Carbon or Aluminum

Aluminum | Carbon | Electric

The Worldwide Leader for In-Boom Reefing Systems

LEISURE FURL™

www.leisurefurl.com | 949.858.8820

by Forespar

See Us at the Show - Booth K5



CALL US TODAY
401-847-7960



GORI PROPELLER
experience the difference

Lowest drag, 100% reverse thrust. Unique overdrive.

SHAFT SHARK

The best rope, line & debris cutter there is!
Two piece, simple install.



**Now 2X
More
Teeth!**



VARIPROP

Feathering Prop. Low drag, adjustable pitch, outstanding reverse.

MOONLIGHT HATCHES

High quality hatches & portlights.
Flush, compact, smooth design.



sales@ab-marine.com | **ab-marine.com**

Cool Products

Doyle Stratis™ Racing

PRE-IMPREGNATED FIBER TECHNOLOGY

Stratis™ pre-impregnated fiber technology provides unmatched flexibility in fiber orientation, accuracy of placement and superior lamination. All fibers are load bearing,

converging to every load point. Visit Doyle at Craneway Booth J6 to learn more.



New England Ropes

NEXUS PRO

New England Ropes Nexus Pro, designed for today's newest one-design sheets and control lines. Perfect for boats that require high tensile such as J/70,



Etchells, Melges, J/24, and larger one-design products. Visit New England Ropes at Craneway Booth G9 to learn more.

Watt&Sea

HYDROGENERATORS

Watt&Sea hydro-generators offer a key solution to produce energy offshore. Visit Watt&Sea at Craneway Booth C4.



Join Club Nautique, and your boating lifestyle begins. You'll learn to master your vessel from the best instructors, aboard the best fleet and all while enjoying the best membership benefits available. And as a Club Nautique member, you'll have special access to the best charter fleets around the globe from Puerto Vallarta to Croatia, Tahiti to the Balearic Islands.

What are you waiting for? With **Club Nautique**, *You're at the helm!*


**Club
Nautique**

You're at the Helm!

1 (800) 559 - CLUB (2582)

www.ClubNautique.net

Show Highlights

From the novice boater to the old salt, the Pacific Sail & Power Boat Show has something for everyone: a huge selection of the latest boats and boating accessories, an extensive seminar schedule, hands-on boating clinics, live music and parties. Full show highlights can all be found on the Show website at www.pacificboatshow.com.

Groundwork Richmond Earth Day Celebration

SATURDAY, APRIL 21

Join Groundwork Richmond's 3rd Annual Earth Day Celebration on April 21 at the Marina Bay Yacht Harbor. Groundwork will be kicking its nature appreciation and fun factor into high gear with their kayak fleet while providing on-the-water tours of Richmond's historic waterfront.

Groundwork Richmond is a local nonprofit dedicated to improving the environment by engaging area youth and Richmond residents in strategic urban conservation projects. We are Changing Places, Changing Lives. To learn more check out www.groundworkrichmond.org or follow us on [Facebook.com/groundworkrichmondca](https://www.facebook.com/groundworkrichmondca)



race! Instructors and fans of the sport will be onsite to introduce you to the sport or talk with you about the latest gear choices and how you can participate in the sport in the Bay Area.

Stand Up Paddling (SUP) offered by 510-Waterline at the public boat launch ramp at Marina Bay Yacht Harbor April 20, 21, 22 (Friday, Saturday and Sunday - weather permitting):

- Free short SUP rides on Friday and Saturday, 11a.m.-2 p.m.
- Earth Day Paddle for those with previous SUP experience on Saturday, 9-10:30 a.m.
- SUP Yoga class Sunday morning from 9-10:30 a.m.

Find out more at www.510waterline.com
Register online to reserve your spot visit www.510waterline.com/schedule/#tmup=/p/564085-510-waterline/



Stand Up Paddle Board Demonstration

FRIDAY, SATURDAY & SUNDAY, APRIL 20 -22

Hosted by 510 Waterline.

Learn more about the sport that originated in Hawaii and is now one of the fastest growing water sports! Get 'on board' and come participate or view the SUPs in the Inner Harbor Basin. From lessons and rides to gear tips to perhaps a



Coast Guard Helicopter Demonstration

WEATHER & RESCUE DEPLOYMENT DEPENDENT

Join the U.S. Coast Guard as they arrive by helicopter to perform a rescue demonstration to connect boating enthusiasts with the rescue efforts offered to mariners. Watch as men and women of the Coast Guard show us all what is involved when they perform a rescue. You will also have the opportunity to listen as public and water safety is presented to a captive audience! Please note: they will postpone their



COME SEE THE BLUE JACKET 40 AT THE 2018 PACIFIC SAIL AND POWER SHOW!

THE BLUE JACKET 40

The Blue Jacket 40 offers an enviable pedigree of two prolific North American designers along with the industry-leading building prowess of Island Packet Yachts. Delivering a unique combination of exhilarating performance, exceptional quality and luxurious accommodations, the Blue Jacket gives you race-winning capabilities as well as a perfect environment for family vacations and overnight getaways.

"This is the boat I have long dreamed of owning. I wanted a boat that is fast, responsive and fun to sail. I wanted a boat capable of long passages, has comfortable accommodations and is, above all, beautiful. This is that boat.

My homeport is Alameda, CA, so to reach San Francisco Bay, I transit the Oakland-Alameda Estuary, typically upwind. In most 40-footers, short tacking the Estuary is exhausting so motoring is the preferred option. On my Blue Jacket 40 with its Hoyt jib boom, tacking is as simple as turning the wheel...SO I SAIL.

I can carry full sail when most boats are reefed. In light wind, the powerful sail plan means I can also sail when most are motoring. The boat is dry, even in 25-knot winds blowing against an ebbing tide and the balanced rudder provides precise and effortless control...SO I SAIL. The boat is also quick to set up and quick to put away. "

John Tuma
Owner Blue Jacket 40
Hull #11



Suncoast Yachts along with Island Packet and Seaward Yachts are pleased to announce that California Yacht Sales will be taking ownership of Suncoast's brokerage operations and become the new California Dealer for Island Packet, Blue Jacket and Seaward Yachts.



2040 Harbor Island Drive

San Diego, CA 92101

(619)295-9669

info@californiayachtsales.com

Show Highlights *continued*

Full show highlights can all be found on the Show website at www.pacificboatshow.com.

planned visit with us should an emergency arise. Please check the website for the latest update on their visit.

Radio-Controlled Model Sailboat Racing & Display

Love model boats? Do you own one? Bring it down to the Inner Harbor Basin each morning and afternoon during the show to sail it or race it. Watch as the mini



yachts make their way through the Basin, keeping you on the edge of your seat for the win. Visitors may even be able to try maneuvering the models with a bit of instruction and supervision.

Authors' Corner

Stop by the Authors' Corner and pick up a great new read from your favorite sailing author. Chat with the experts, receive some great advice for your next sailing trip, get a signed book, and hear a tale or two about any number of sailing topics and adventures. Authors will be set up in both the Seminar Pavilion and the Marina Exhibition Tent.

The Fastest Way To Get Downwind

Twist Lock

Tri-Reacher™

Velocity™ Carbon

Whisker Poles Are Faster Downwind Than Asymmetrical Sails On Most Boats

- Carbon, Aluminium, 50/50 Combos
- Twist Lock, Tri-Reacher or Adjustable Length Line Control Models

World's #1 Whisker & Spinnaker Poles

5th FORESPAR®

PERFORMANCE PRODUCTS

1966 - 2016

For More Info Go To: www.forespar.com | 949.858.8820

See Us at the Show - Booth K5

Afterguard Sailing Academy

See us at Booth H16

Did/does the person you tried to sail with have a square mouth?

Afterguard, the fun "No Yelling" place to get a great education changing fear to passion.

Afterguard is the Affordable way to ASA

- Charter/Instr Fleet 13'-43' Keelboats & Catamarans
- ASA Basic to Ocean Week long or Weekends
- Youth scholastic programs Summer Cruising Camps
- Membership Savings on Courses, Charters, Events

Excellent ASA+ Instruction - Great Prices - Sail San Francisco Bay

www.afterguard.net 510 535-1954

On-the-Water Lifestyle

Welcome to the Discover Sailing & Boating Clinics at the Pacific Sail & Power Boat Show



Whether you are a novice or experienced on the water, there is something for everyone in the programs offered at the 2018 Pacific Sail & Power Show.

Take a cruise or a clinic with Discover Sailing. Whether you are a cruiser or a racer, thinking about the next boat or that next charter vacation, or looking to try out the latest boats on offer and learn about new technologies and styles, one of these programs will be right for you!

To help boaters get the most out of their vessels and

feel confident when considering their next boat, we are featuring several hands-on on-the-water clinics led by some of the best instructors in the Bay Area.

We have two terrific partners who will run courses for boaters interested in sailing courses and powerboating courses – Club Nautique and Passage Nautical, both based in the Bay Area. Courses offered may include topics such as: Catamaran Sailing Clinic, An Intro to Sailing a Boat Over 40-ft. Twin Engine Clinic – Maneuvering & Docking, and many more.

Full course descriptions, schedules and fees can all be found on the Show website at www.pacificboatshow.com.

Sponsored by



Produced by



Richmond: Before, During & After the Show

MAP IT/BOOK IT @ VisitRichmondCA.com
FIND IT @ RichmondOnTheBay.com/GO



Richmond welcomes the Pacific Sail & Power Boat Show in its third year at the Craneway Pavilion. The show, like Richmond, has expanded. We can't wait to show you what Richmond's got to make your show experience fun and easy! Three breweries, four wineries, international flavors, jazz, access to watersports and two marinas along the Bay Trail.

Pick up a trail guide at the show—it's packed with over 18 restaurants, 12 hotels, 18 things to do, and in case you didn't know, Richmond is VERY dog-friendly—our map shows you the hotels, restaurants and parks that will help make your visit easy and enjoyable!



The Richmond Trail Guide is brought to you by:



Advance Registration Seminars

Advance Registration and Fee Required

Surface Pressure Chart Workshop

LEE CHESNEAU: THURSDAY, APRIL 19, 1-4 P.M.

This 3-hour workshop takes a closer look at the surface pressure charts generated by the NWS, NHC, and the NWSFO HNL. The workshop will be introduced first at 11:45 a.m. with a 1-hour free seminar, 'An Introduction to Surface Pressure Concepts and Charts,' (a prerequisite to the workshop).



Lee Chesneau

Lee Chesneau is a senior marine meteorologist, lecturer, and a graduate from the University of Wisconsin (Madison) with a degree in meteorology. His degree in Meteorology was Lee's ticket to a distinguished and extensive career with NOAA's National Weather Service (NWS), NOAA Satellite Service (NESDIS), U.S. Navy Ship Routing Office (SRO), a Route Analyst for a commercial weather and ship routing company (Ocean Routes, Inc.), and his career start as a naval officer serving on two aircraft carriers, USS *Saratoga* CV-60 and USS *Guam* LPH-9 (where he served as the ship's meteorological and oceanographic officer).

Today, in addition to being a highly seasoned and experienced professional marine meteorologist, Lee is an accomplished U.S. Coast Guard certified instructor for basic and advanced meteorology at six continuing training institutions for professional mariners. Lee owns Lee Chesneau's Marine Weather, with national sponsors, such as Cruising Outpost.

500MB Chart Workshop

LEE CHESNEAU: FRIDAY, APRIL 20, 11:45 A.M.-3:15 P.M.

This 3-hour workshop goes deeper into different components of the upper-level 500MB chart discussed in the prerequisite free seminar at 10:30 a.m., 'An Introduction to the Upper-Air 500MB Concepts and Charts.' The workshop will further your understanding of this important tool for self-reliant marine weather forecasting, vessel routing offshore, and sailing on the high seas.

El Faro Tragedy Workshop

LEE CHESNEAU: SUNDAY, APRIL 22, 11:45 A.M.-3:45 P.M.

This 4-hour workshop will discuss the basics of Tropical Cyclones (Hurricanes) & their impacts in the Eastern North Pacific Oceans (from Mexico's West Coast to Hawaii), the Gulf of Mexico, the North Atlantic Ocean, and sometimes even the Great Lakes.

Marine Diesel Engines: Maintenance and Troubleshooting

NIGEL CALDER: FRIDAY, APRIL 20, 9 A.M.-5 P.M.

The diesel engine is a critically important piece of safety equipment aboard any cruising boat, power or sail. Tech guru Nigel Calder, author of the best-selling *Marine Diesel Engines*

(now in its 3rd edition and used as a textbook in numerous diesel classes), brings his unique brand of humor to a seminar for boat owners, both power and sail, who want to get the most



Nigel Calder

Sign up in advance to guarantee a spot.
www.pacificboatshow.com

out of their time on the water. Distinguishing between contemporary and older diesels, Calder details often overlooked critical installation issues, and takes a careful look at fuel, oil, cooling, airflow, and powertrain systems, describing in detail all normal maintenance procedures together with basic troubleshooting techniques for common diesel engine problems, defining what the untrained boatowner can reasonably be expected to do and what should not be attempted. You will come away from this seminar with an enhanced understanding of your engine and the confidence to carry out routine maintenance, which alone will save you the price of admission. No previous experience is required.

Understanding and Troubleshooting Boat Electrical Systems

NIGEL CALDER: SUNDAY, APRIL 22, 9 A.M.- 5 P.M.

The number one source of problems on boats large enough to have an electrical system, both power and sail, lies in these electrical systems. Tech guru Nigel Calder, author of the best-selling *Boatowner's Mechanical and Electrical Manual* (now in its 4th edition, with over 300,000 copies sold), takes participants through the core design and installation requirements necessary to head off electrical systems problems, and then delves into step-by-step troubleshooting techniques, including using a multimeter, that will rapidly identify most problems should they arise. Not only will you leave class with a far better understanding of your electrical systems and knowing how to fix common problems, but you will also likely save the price of admission by not having to make service calls or swap out perfectly good parts in search of solutions. No previous experience is required.

Nigel Calder is best known for his *Boatowner's Mechanical and Electrical Manual* and *Marine Diesel Engines*, both considered definitive works.



Fast Furl

NEW FX+
Continuous Line Furlers

- Lightweight Carbon Housing with Integrated 360 Line Exit
- Exclusive Quick Release Attachment
- The Only Furler on the Market Featuring a Bi-directional Lock
- Converts to Top-Down Style

facnor®
FURLING SYSTEMS

facnor.com/ | tel: (704) 597-1502
sales@wichard-sparcraft.com

Advance Registration Seminars

Offshore Cruising Seminar

JOHN & AMANDA NEAL OF MAHINA EXPEDITIONS WITH
TECH GURU NIGEL CALDER: SATURDAY, 8:30 A.M.- 5 P.M.

Self-sufficiency and preparation for your cruising adventures, whether to Mexico, the South Pacific or worldwide, is the focus of this intensive eight-hour seminar. Technical guru and author Nigel

Calder joins John and Amanda Neal for 18 dynamic topics illustrated with PowerPoint presentations and documented in the included 260-page *Offshore Cruising Companion*.



John & Amanda Swan Neal

In-depth topics include: Selecting and Outfitting a Boat for Offshore Cruising, Diesel Engine Overview, Storm Survival Tactics, Rigging & Sails, Communications, Anchoring, Piracy & Security, Managing Your Escape, Cost of Cruising and Best Worldwide Cruising Areas. This is the 167th Offshore Cruising Seminar John and Amanda have presented to 12,000 sailors since 1976. Visit www.mahina.com/seminar.html for the list of topics and schedule. John Neal's 364,000 ocean miles over 44 years include 28 years of conducting 190 worldwide sail-training expeditions aboard *Mahina Tiare*, a Hallberg-Rassy 46, detailed on www.mahina.com. He is author, co-author, or contributing author of 16 books. John and his wife Amanda annually spend six months at sea, sailing 10,000 miles. Their seminars incorporate the latest information, techniques and resources. Amanda Swan Neal's 324,000 ocean miles include completing the Whitbread Around the World Race as rigger aboard *Maiden*, two Sydney Hobart Races and seven Cape Horn roundings.

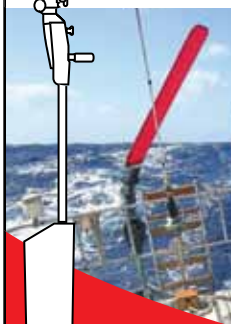
An advertisement for exploring the Sea of Cortez. It features a large image of a sailboat and a motorboat in turquoise water. Below this, the text "-EXPLORE-" is written in large white letters on a brown background, with "The Sea of Cortez" in smaller white text below it. At the bottom, there are three small images: a plate of food, a whale, and a beach. Below these images are social media icons for Facebook and Twitter, the text "/purelapaz", the website "www.golapaz.com", the "MEXICO" logo with "visitmexico.com" below it, and the "La Paz" logo with "Baja Sur" below it.

An advertisement for Marina Cortez La Paz. It features a large image of a sailboat with the text "MARINA CORTEZ LA PAZ" below it. To the right of this image is a smaller image of a woman sitting on a boat. Below the main image, the text "Mexico's Premier Marina" is written in a script font. Below this, the text "50 slips, accommodating even the largest vessels. Electricity at each slip and Wireless Internet Access. The most modern Marina Design in Mexico." is written. At the bottom, the website "www.MarinaCortez.com" is listed, followed by contact information: "Email: dockmaster@marinacortez.com • Office: +52+612 123 4101 Fax: +52 612 125 4212 • From the USA: +52+1+612 157 0013".

FEEL THE FREEDOM

With an Independent Self-Steering Windvane AND 'Ready to go' Emergency Rudder

- Steers 24/7 - your best crew member!
- Install off center, with davits, arch...
- No lines connecting to wheel or tiller
- Confidence in case of steering or rudder failure



ECHO Tec
Watermakers

watt&sea
Hydrogenerator

HYDROMAX
Fuel Cell Battery Charger



STEERING THE DREAM

Booth
E15

SARAH & WILL'S
FREE CRUISING
SEMINARS:

- Self Steering Windvanes & Emergency Rudders
- CRUISING FORUM - with Panelists **John & Amanda Neal**
- Tips & Traps: Cruising the Coast, Mexico, & South Pacific

THU APR 19 2:15PM

FRI APR 20 2:15PM

SAT APR 21 11:45AM

SAN JUAN ISLANDS



6-Day Learn-N-Cruise

Fly to Bellingham, WA, and complete your American Sailing Association Basic Sailing through Bareboat Cruising Certifications during a Saturday 1pm - Friday 1pm liveaboard week exploring the spectacular San Juan Islands. Spring tuition only \$1485, including food! (Air SFO-BLI-SFO approx. \$425)

No experience like this for the price in the SF Bay Area!

SCHOOL
AMERICAN SAILING ASSOCIATION



CHARTER
Exceptional Yachts
from 29 to 57 feet

Over 35 Years of Sailing Excellence
We certify more Bareboat Skippers than any other school on the West Coast!

360-671-8339 • www.sanjuansailing.com

 **SailTime**
San Francisco Bay

Join the world's leading
SAILING MEMBERSHIP COMPANY

**SAIL THIS
BOAT**
7 times a month
for \$850



Pop On Over for some free popcorn and to meet the SailTime team at the blue tent across from food trucks at the In Water Boat Show!

(415) 869-2861
www.SailTime.com

Free Seminars

Please visit www.pacificboatshow.com for the latest seminar schedule and speaker information.

John Arndt



John Arndt, publisher of *Latitude 38* and founder of Summer Sailstice, will entertain with stories and adventures from more than 30 years of *Latitude 38* and a lifetime of sailing. Arndt grew up sailing in Maine and, since then, has taught sailing, raced and cruised oceans, enjoyed more than 30 years in the sailing industry working with *Latitude 38*, the Baja Ha-Ha, Sail America, SailSFBay and Summer Sailstice. John will also moderate a panel of current Bay Area liveboards.

Elbert Ashbaugh



Ashbaugh has designed sailing courses and taught sailing in the US, Europe, the Caribbean, and the Far East for more than 20 years. He is the Affiliate (schools) Representative for American Sailing Association and consults in the development of the ASA's latest tools and methodologies.

Richard Beckett

Richard sailed twice to Mexico in 1988-89 and 2000-2004. He was an operator of the WA6OYC winlink station. He provided instruction to cruisers to get their amateur radio license since 1990.

Bruce Balan & Alene D. Rice



Aboard their Cross 46 trimaran *Migration*, Bruce and Alene recently completed a 12-year, 54,000-mile circuit of the Pacific. They will be heading back to French Polynesia in 2019.

Joanna Bloor

The first time Randall Reeves left his wife at home, he said he'd be gone for a year. He was gone two years. Seven years and multiple departures later, Joanna is still his biggest supporter. She's spoken at TED, Dreamforce, and other marquee conferences. Today she is turning the tables and speaking as his wife, the one left behind.

Rich Boren

Rich has been living aboard and cruising with his family for the last 10 years and is the owner of Cruise RO Water. Living in Mexico and dealing with cruisers in need of watermaker repair helps Rich keep up to date on the latest watermaker technology and challenges.

Bruce Brown



Bruce Brown is a noted presenter, sailor and author. He has written many articles for publications and

web blogs. Bruce has multiple trips to Mexico and across the Pacific both racing and cruising. He has cruised in California, Maryland, Turkey and Mexico. Bruce Brown is also a US Sailing Safety at Sea Course Moderator and a USCG 100-Ton Captain's License Instructor. He is one of the authors of the US Sailing Companion Guide to Safety at Sea Courses.

Captain Lisa Chapin



Captain Lisa has been a lifelong sailor safely navigating from sailing a Sunfish with her dad and the family dog to cruising halfway around the world on four different sailboats as crew. For the past 10 years she has been using her captain's license to help keep sailing alive by helping busy people have a boatowner-like experience at SailTime San Francisco.

Jimmy Cornell

Jimmy Cornell has influenced the contemporary cruising scene more than any other sailor. An accomplished sailor, public speaker and author, he has sailed over 200,000 miles in all oceans of the world, from Antarctica to the Arctic – including three circumnavigations – and has written some of the best-selling nautical publications in the world, many of which have been translated into several languages. Thousands of sailors have fulfilled their dream of blue-



water cruising with the help of Jimmy Cornell's books, among them the international bestseller *World Cruising Routes*. With 200,000 copies sold to date, this is currently the best-selling nautical publication in the world.

Sarah & Will Curry



Will and Sarah Curry bought their first boat in Mexico in 2012. After Will showed Sarah the ropes, they sailed into the sunset-West, across the incredible South Pacific. SV *Hydroquest* sold in Australia, but they knew they were addicted to the lifestyle... On to Boat #2. After outfitting their Jeanneau 43 in Vancouver, they set off cruising again in 2017 – albeit at a slower pace.

Fito Espinoza

A native of Tijuana, Espinoza has 22 years of experience as a marina manager in Ensenada's Marina Coral, a favorite destination for boaters making their first stop in Mexico. Making sure everybody has the correct paperwork to clear in to the country is an obligation he takes very seriously. Over the past four years Espinoza has collaborated with the Mexico Tourism Board to promote Mexico's nautical destinations.

These free seminars provide a wealth of information for novices and experts.

Janet Glenny



Janet Glenny is a registered nurse who currently works in an emergency department. She has 20 years of experience in

emergency medicine and has trauma certification. Janet, with her family, owns *Kairos*, a 38-ft. Island Packet sloop, and has sailed to the Caribbean and South Pacific with *Kairos* currently in Palau, Micronesia.

Virginia & Robert Gleser



Virginia and Robert Gleser have just completed their 18th year of cruising their Islander Freeport 40, ketch, *Harmony*,

from San Francisco to Mexico and beyond to Latin America and Ecuador. They have been married for 47 years, and have raised eight children. When their last child went off to college in 2000, they sold their business, headed out the Golden Gate, and turned left to cruise in warm climes.

Mike Gunning

Mike is a principle in Electric Yacht and owner of Electric Yachts of Southern California. Mike has 40 years of financial and computer sales plus eight years of converting over 250 boats in North America.

Wendy Hinman

Wendy Hinman, award winning author of *Tightwads on the Loose* and *Sea Trials*, shares the wisdom she gathered during her seven-year 34,000-mile voyage aboard her 31-ft cutter, as well as years racing in all manner of boats ,with her husband and others.

Leigh Hunt



Leigh Hunt is the President and CEO of Modern Sailing School and Club in Sausalito, CA. Leigh has been destination

sailing since 2005, with multiple trips to the Caribbean, the South Pacific and the Mediterranean. In 2012, Leigh completed a 750-mile delivery from Corfu to Cypress, and in 2016 he returned to the Aegean on a destination charter with Modern Sailing. In 2017 he led a charter trip to Bora Bora, Tahaa and Huahine.

Captain Tanja Koster



Captain Tanja Koster recently completed 3/4 of a circumnavigation onboard a double-handed, 43-ft racer-cruiser.

Combining thirty-five years in education and professional mentoring, with a lifetime on the water, sailing and motor yachting, enables Tanja to individualize instruction and meet the goals and needs of each person onboard.

Grand Opening

Charter Puerto Vallarta

- Fleet of brand new Jeanneau sail & power yachts
- Daily non-stop flights from major US airports
- Charter base located in Paradise Village Marina, just 20 minutes from PVR International Airport
- Sunshine, warm water, great sailing/cruising conditions on Banderas Bay & Mexican Riviera
- Full access to all resort facilities: supermarket, golf, hotel, spa, tennis, pool, restaurants, hospital & more
- Incredible Value! – cheap flights plus 19:1 exchange rate means you save big on your charter vacation



To book contact:



www.ClubNautique.mx 1-800-559-CLUB(2582)

Free Seminars *continued*

Gregory Kutsen

Greg Kutsen is a founder and CEO of Mantus Marine, a well-known and rapidly growing marine accessories manufacturer. Although an emergency doctor by night he has dedicated last six years to designing and improving the ground tackle gear and is eager to share lessons learned.

Stan Lander



Stan Lander is the Head Instructor at Modern Sailing School and Club. After graduating from college, Stan entered the United States Coast Guard. During his 20-year career, he served on the Coast Guard Cutter *Morganthau* as a Deck Watch Officer and Coast Guard Cutter *Northland* as the Operations Officer.

Carrie Ding



Carrie Ding, Marketing Manager of Taiwan Tourism Bureau, loves to introduce Taiwan to people through a different lens.

Captain Dan Leininger



Dan is a retired Naval Officer and has been teaching maritime courses for more than 30 years. He holds a Master (Near Coastal) 100-GT License with Radar, Towing and Sailing Endorse-

ments. Dan has been an instructor at the Maritime Institute, Inc., for more than seven years.

Richard Markie



Dick started cruising Mexico in 1990 after selling his business and leaving California. He spent several years cruising all of the Mexican coast. He opened and ran Marina Mazatlan for many years before moving to Nuevo Vallarta, where he was charged with the designing and managing of Paradise Village Marina.

Vivian Matuk & James Muller



Vivian Matuk is the California State Parks Division of Boating and Waterways (DBW) and the California Coastal Commission's (CCC) Environmental Boating Program Coordinator and Clean Vessel Act Education and Outreach Program Manager. Vivian manages the statewide Boating Clean and Green program led by DBW and implemented in partnership with CCC. The program promotes environmentally-sound boating practices to marine business and boaters.

McIntosh & McCaleb

The McCalebs and the McIntoshes each have more than 45 years of sailing under their belts. Their sailing resumes include having sailed thousands of miles in the South Pacific, the Ca-



ribbean, and, more to the point of these seminars, the west coasts of North and Central America. In the process, they have made multiple trips up and down the coasts of California and Mexico, including several Baja Ha-Ha's and Baja Bashes.

Captain Steven Parry



Captain Parry is a 26-year veteran RYA Commercial Yachtmaster and runs Poseidon Charters, a yacht charter agency which specializes with crewed yachts, bareboat charters, unique advanced level flotillas and hands-on cabin charters. He is a guest speaker across North America and has been published in *Sail Magazine*.

Karen Reyna

Karen Reyna is the Resource Protection Coordinator for the Greater Farallones National Marine Sanctuary and the Director of the Seabird Protection Network, which is a collaboration of state and federal agencies, organizations, boaters and kayakers focused on minimizing harm to breeding and roosting seabirds along the California coast. Karen is a sailor, kayaker and paddler who was part of the California Marine Life Protection Act initiative.

Kame Richards



Kame Richards is a sailmaker and sail designer at Pineapple Sails, which he co-founded in 1973. Pineapple Sails makes both racing and cruising sails, literally building them from start to finish at its facility locally in Alameda, CA.

Zack Smith



Zack Smith for more than 20 years has published numerous training videos, technical reports, and articles related to the testing and development of para-anchors and storm Drogues. Smith has worked with the US Navy, US Coast Guard, and NASA in an effort to improve drag device safety.

Thomas Trimmer



Trimmer is the founder and owner of Custom Marine Products, a company specializing in marine solar systems for the cruising sailor. Mr. Trimmer has been a cruising sailor for more than 20 years and understands that the number one challenge to comfortable cruising is the availability of electrical power. His company has helped many sailors analyze their power requirements, evaluate solar products available, and design systems to meet their needs.



Paradise Village[™]
MARINA

CRUISING MEXICO SEMINARS

Pacific Sail & Power Boat Show

Hosted by

Dick Markie, Paradise Village Marina Harbor Master

FRI, APR 20TH / 1:00 PM - 2:00 PM

At Room A in the Craneway Seminar Pavilion

SAT, APR 21ST / 1:00 - 2:00 PM

At Room C in the Craneway Seminar Pavilion

PROGRAM

- Safety
- Timing
- Route
- Weather
- Events
- Provisioning
- Paperwork
- Fishing
- Health Care
- Navigation



No Charge - Mexican Prizes • Questions about Mexico will be answered!

marina@paradisevillagegroup.com • Tel. 011 52 322 226 6728 • www.paradisevillagemarina.com

Cutting Edge

NEW Offshore Knife

- Lightweight
- One Hand Opening
- Straight or Serrated Locking Blade
- Superior Blade Sharpness And Durability



wichardamerica.com/ | tel: (401) 683-5055
sales@wichard-sparcraft.com

Let's Party

Celebrate TGIF Sponsored by *Latitude 38*

FRIDAY, APRIL 20 AT 6 P.M.

Join the Pacific Sail & Power Boat Show exhibitors at a Friday evening show tradition. Kick back and enjoy a party for one and all at Assemble Restaurant in the Craneway Pavilion. Plan to come to the show in the afternoon and then stay for the party. Attendees must be in the show by 5:30 p.m. in order to join the festivities. This lively evening with show exhibitors and sponsors promises to be a fun night to start your weekend with a bang.



Don't Miss Cruisers' Party

SATURDAY, APRIL 21, AT 6 P.M.



More than a dozen years ago, Bob Bitchin and Jody of Cruising Outpost created the Cruisers' Party at the then-Strictly Sail Pacific. Cruis-

ers come from all over to enjoy this annual celebration of the cruising lifestyle. Eric Stone will be live and in concert, while you enjoy a slice of pizza and a beer or glass of wine.

There will be great raffle prizes, including PureWater+ by Forespar, Canberra Gel gift box, Mantus Anchors, and many more. Proceeds go to The Educational Tall Ship Foundation Project S/V Matthew Turner, being completed in Sausalito, CA.

The event is free and open to all show attendees and exhibitors. It starts when the show closes at 6 p.m. You must be in the show prior to closing to attend.

Be part of the biggest, most fun cruising party of the year!



Marina COSTABAJA

THE FINEST MARINA IN BAJA

Marina CostaBaja, at the Gateway to the Sea of Cortez in La Paz, South Baja.

Marina CostaBaja's protected location, concrete docks and double basin design offers controlled access to 250 prime slips for vessels ranging from 30-200 feet.

OUR PRIME FACILITIES

Potable desalinized water • Secure dock boxes • Largest fuel dock in the area • Crew lounge
Pump out service • 24 hour security • Laundry service

Visit **CostaBaja**, a master planned community and enjoy Golf or relax at the Beach Club or choose your future home among a variety of Condos, Villas and Townhouses.

Discover the most beautiful bays, islands and marine life in what is known as "The Aquarium of the World".



Gabriel Ley (Marina Manager)
marina@marinacostabaja.com
Toll Free 888-866-9394
www.marinacostabaja.com



COSTABAJA
Unique living on the Sea of Cortez
marina • golf • residences

www.marinacostabaja.com

Exhibitors

Please check our website at www.pacificboatshow.com
for updated exhibitor listings, boats on display, and seminar information.

727 Sailbags

Craneway Pavilion F16

AB Marine

Craneway Pavilion K3

AB West

Craneway Pavilion K9

Aero and Marine Tax Professionals

Craneway Pavilion C14

Absolute Yachts

In-Water Space

Afterguard Sailing Academy

Craneway Pavilion H16

Air Head Toilet, EOS Design

Craneway Pavilion J5

Almar Marinas

In-Water Space

AME Captain's Licensing

Craneway Pavilion A4

American Battery Company

Craneway Pavilion C4

Arboreal Systems, Inc.

Craneway Pavilion B4

Atomic Tuna Yacht Sales

Craneway Pavilion D8

B&G Navico

Craneway Pavilion E11

Bainbridge International

Craneway Pavilion C15

Bay Area Boat Loans- Intercoastal Financial Group

Marina Exhibition Tent T1

Beneteau Yachts

In-Water Space

Blue Jacket Yacht

In-Water Space

Boatswain's Locker

Craneway Pavilion A6

Boye Knives

Craneway Pavilion C7

Brickyard Cove Marina

Craneway Pavilion D3

British Virgin Islands Tourist Board

Craneway Pavilion I14

Bruce Brown & Associates

Craneway Pavilion K11, K5, K9

California State Parks Div. of Boating & Waterways

Craneway Pavilion G8

The Canvas Works

Craneway Pavilion I10

Cape Hatteras Marine, Inc.

Craneway Pavilion I15

Carefree Boat Club of San Francisco Bay

Craneway Pavilion J11

Catalina Yachts

In-Water Space

City of Berkeley Marina

Marina Exhibition Tent T28

Click Heat Inc.

Craneway Pavilion B3

Club Nautique

Craneway Pavilion B6

Coastal Find

Craneway Pavilion D4

Corsair Catamaran

In-Water Space

Coyote Point Yacht Club

Craneway Pavilion E9

CPT Autopilot

Craneway Pavilion G2

Cruise RO Water and Power

Craneway Pavilion D2

Cruisers Yachts

In-Water Space

Cruising Outpost

Craneway Pavilion M11

Dan Boater

Craneway Pavilion G12

Davis Instruments

Craneway Pavilion K13

Dehler Yachts

In-Water Space

Delta Sailing School

Craneway Pavilion E3

Doyle Sailmakers

Craneway Pavilion J6

Dream Yacht Charter

Craneway Pavilion B16

Dubarry of Ireland

Craneway Pavilion L7

Dutchmar

Craneway Pavilion D1

Easom Rigging and Racing/Marlow Ropes

Craneway Pavilion B10

Electric Yacht

Craneway Pavilion I16

Essex Credit

Craneway Pavilion J3

Euro Marine Trading, Inc.

Craneway Pavilion G3

Fiorentino Para Anchor

Craneway Pavilion J4

First Mate Marine, Inc.

Craneway Pavilion E16

Forespar

Craneway Pavilion K5

Garhauer Marine

Craneway Pavilion C8

Garmin USA

Craneway Pavilion D16

Glen Cove Marina

Craneway Pavilion B7

H&C Marine/CEMA

Craneway Pavilion J15

H&M Marine Services/ Beta Marine West

Craneway Pavilion K2

Handcraft Mattress Co.

Craneway Pavilion D7

Hanse Yachts

In-Water Space

Helly Hansen

Craneway Pavilion I1

Helmut's Marine

Craneway Pavilion G1

Hydrovane

International Marine

Craneway Pavilion A6

HyperVent Marine

Craneway Pavilion G4

Imtra Corporation

Craneway Pavilion M7

Inflatable Sport Boats

Marina Exhibition Tent T19

Island Packet and Seaward Yachts

In-Water Space

Jeanneau America

In-Water Space

JK3 Nautical Enterprises

In-Water Space

Johnson Hicks Marine Electronics

Craneway Pavilion D10

Johnson Marine (C. Sherman Johnson Co., Inc.)

Craneway Pavilion K9

Kanberra Group

Craneway Pavilion L8

KKMI

Land Bay Trail West BU1

Latitude 38 Media

Craneway Pavilion C1



Visit Mexico's First Port of entry south of the border


MARINA CORAL

ENSENADA, BAJA CALIFORNIA

WORLD-CLASS MARINA IN ENSENADA OFFERS:

- 353 slips up to 110'
- Ensenada's only fuel dock-diesel & gasoline
- Check-in clearance assistance with Immigration, Port Captain and Customs.



ALSO, FEATURES A FIVE-STAR HOTEL WHICH ACCOMMODATIONS INCLUDES:

147 suites, pools, spa, restaurants, bars,
transportation to San Diego, trips to the
vineyards and outstanding landscapes
for weddings and events.

CONTACT US

VHF CHANNEL 71

Latitude 31°51'38.59" N

Longitude 116°39'36.342" W

USA 1 (866) 302-0066

marina@hotelcoral.com

www.hotelcoral.com

Live the #CoralExperience

     | Follow us

Exhibitors *continued*

Lagoon Catamaran

In-Water Space

Lee Sails of California

Craneway Pavilion C8

**Leukemia Cup
Regatta**

Craneway Pavilion D11

Live 2 Wake

Craneway Pavilion B8

MagicEzy

Craneway Pavilion K9

Mantus Marine

Craneway Pavilion K16

**Mariner International
Travel/Sunsail**

Craneway Pavilion L10

Maritime Institute

Craneway Pavilion L14

Maritimo Yachts

In-Water Space

**Modern Sailing
School & Club**

Craneway Pavilion C2

Musto

Craneway Pavilion L1

Nauti Girl

Craneway Pavilion E6

Neptune Maps

Craneway Pavilion F6

New England Ropes

Craneway Pavilion G9

New Found Metals

Craneway Pavilion J7

**North Beach Marine
Canvas (Yacht Interiors)**

Craneway Pavilion J9

North Sails

Craneway Pavilion F1

**Oakland Intl Maritime
Ctr/Seafarers Ministry**

Marina Exhibition Tent T34

Oakland Yacht Club

Craneway Pavilion D5

Owl Harbor Marina

Craneway Pavilion E4

Pantaenius America Ltd.

Craneway Pavilion B1

**Paradise Village Beach
Resort and Marina**

Craneway Pavilion G14

Park Presidio Marine

Craneway Pavilion H6

Passage Nautical

In-Water Space

Pineapple Sails

Craneway Pavilion L5

Porta-Bote International

Craneway Pavilion C16

Poseidon Charters

Craneway Pavilion D6

Princess Yachts

In-Water Space

Principal Financial Group

Craneway Pavilion L11

PYI Inc.

Craneway Pavilion H15

Quantum Sails

Craneway Pavilion J1

Recreation Publications

Craneway Pavilion F7

Remora Marine Inc.

Craneway Pavilion D13

Renewal by Andersen

Craneway Pavilion F3

Richard Boland Yacht Sales

In-Water Space

Richards Marine Marketing

Craneway Pavilion H9

Riviera Yachts

In-Water Space

**Richmond Convention
and Visitors Bureau**

Craneway Pavilion J13

Ronstan

Craneway Pavilion G15

Rum Reggae, Inc.

Craneway Pavilion A1

**Sacramento Model
Yacht Club**

Marina Exhibition Tent T16

Sail California

In-Water Space

Sailology, LLC

Craneway Pavilion E1

SailSFBay

Craneway Pavilion E8

SailStep, LLC

Craneway Pavilion C5

SailTime San Francisco

Marina Exhibition Tent BU33

SailTimer Inc.

Craneway Pavilion D15

Samson Ropes

Craneway Pavilion K11

San Francisco

Estuary Partnership

Craneway Pavilion G8

San Juan Sailing

Craneway Pavilion F5

Scanmar

International

Craneway Pavilion K1

Seahorse Marine

In-Water Space

Seahorse Yachts

In-Water Space

Seanet Company, Inc.

In-Water Space

SeaTech Systems

Craneway Pavilion I12

Silver Seas Yachts

In-Water Space

SkyMate

Craneway Pavilion H13

**Southern California
Marine Enterprises**

Craneway Pavilion H5

Spaulding Marine Center

Craneway Pavilion J10

Spinlock

Craneway Pavilion M1

Star Marine Electronics, Inc.

Craneway Pavilion F15

Sterling Associates

Craneway Pavilion G6

Summer Sailstice

Craneway Pavilion E10

Sure Marine Service Inc.

Craneway Pavilion K12

**Svendsen's Marine
and Industrial Supply**

Craneway Pavilion N3

Swedish Marine

Craneway Pavilion H10

Thunderstruck Motors

Craneway Pavilion G16

Tiara Yachts

In-Water Space

Tradewinds Sailing School

Craneway Pavilion E12

**Trident Funding Corp.
Yacht Financing Specialists**

Craneway Pavilion B2

Twin Rivers Marine

Insurance Agency, Inc.

Craneway Pavilion H1

Ultra Marine West

Craneway Pavilion E5

Vallejo Yacht Club

Craneway Pavilion J14

VetusMaxwell, Inc.

Craneway Pavilion L12

Viadana US

Craneway Pavilion J16

**Viking Life-Saving
Equipment (America)**

Craneway Pavilion A2

Weather Routing, Inc.

Craneway Pavilion L16

West Coast Sailing

Craneway Pavilion I9

**Western Marine Market-
ing, Inc. (Pettit Paint)**

Craneway Pavilion B11

Wichard

Craneway Pavilion B9

Wind Toys

Craneway Pavilion I4

Winslow LifeRaft Co.

Craneway Pavilion F8



NEXUS PRO
The gold standard for performance sailing

Durability. Innovation. Performance.

Nexus Pro has a durable lightweight cover that offers excellent grip and holding power and a Dyneema® SK78 core that sailors desire from a sheet or control line. Contact your local rig shops for sizing.

New Website
check it out!
neropes.com



NEW ENGLAND ROPES
A TEUFELBERGER BRAND



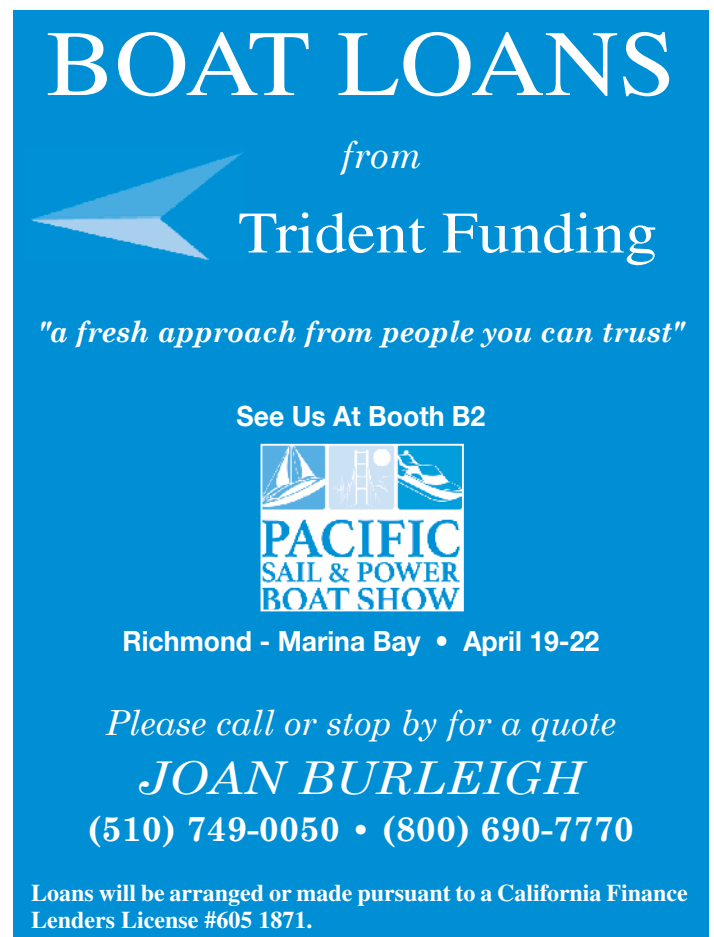
Oakland Yacht Club

BERTHS AVAILABLE

**Come see us at the
Pacific Sail and Power Boat Show
April 19 – 22
Then visit us for our open house
Saturday, May 5**

Located on the "ALAMEDA RIVIERA" - Best WEATHER on the Bay
Active Cruising and Racing Programs and easy access to Estuary for Paddle Sports
Special Events at the Club, every month!
Music & Dancing, Weekly Dinners, Education Series, Wine Maker's Dinner
CELEBRATING OVER 100 YEARS OF BOATING TRADITION

Oakland Yacht Club
In Alameda, CA
1101 PACIFIC MARINA
(510) 522-6868
www.oaklandyachtclub.com
membership@oaklandyachtclub.com





BOAT LOANS

from
Trident Funding

"a fresh approach from people you can trust"

See Us At Booth B2



**PACIFIC
SAIL & POWER
BOAT SHOW**

Richmond - Marina Bay • April 19-22

Please call or stop by for a quote
JOAN BURLEIGH
(510) 749-0050 • (800) 690-7770

Loans will be arranged or made pursuant to a California Finance Lenders License #605 1871.

East to West We Have You Covered



Visit us at Newport Beach and Pacific Sail and Power Boat Shows, or call our West Coast office at 619-215-9106.

PANTAENIUS
Yacht Insurance

USA* • Germany • Great Britain • Monaco
Denmark • Austria • Spain • Sweden • Australia

*Pantaenius America Ltd. is a licensed insurance agent licensed in all 50 states. It is an independent corporation incorporated under the laws of New York and is a separate and distinct entity from any entity of the Pantaenius Group.

The Venue



Craneway Pavilion

1414 Harbour Way South, Richmond, CA

Marina Bay Yacht Harbor

1340 Marina Way South, Richmond, CA

Location, Location, Location

In the heart of the East Bay and convenient to the 580 freeway – 10 minutes from Berkeley, five minutes from the Richmond/San Rafael Bridge, and 15 minutes from the San Francisco Bay Bridge.

Parking

Craneway Pavilion has 1,200 private and secure parking spots. Craneway Pavilion is respectful of its neighbors and, as a guest of the Craneway we extend this obligation to you as well. Please do not park in nearby business parks, neighborhoods or residential parking lots in the area. Drive to Craneway and follow the signs to safe secure parking.

Nearest Major Airports

Oakland/OAK 22.5 miles, 20-30 minutes per traffic and San Francisco/SFO 27 miles, 30-60 minutes per traffic.

Explore Local Restaurants and Brew Pubs

See www.visitrichmondca.com



MARINA BAY YACHT HARBOR

HOMEPORT FOR THE



**PACIFIC
SAIL & POWER
BOAT SHOW**

APRIL 19-22

***Deep Water Harbor –
Easy Access by
Land or Sea!***



We have a deep slip for you.

**One of the deepest marinas
on San Francisco Bay:
12-ft depth minimum!**



(510) 236-1013

www.MarinaBayYachtHarbor.com

Travel & Contacts

Official Hotel of the 2018 Pacific Sail & Power Boat Show

Driving

From Oakland, Alameda, San Jose:

Take 880 Northbound to 580 Westbound. Continue on 580 West towards Pt. Richmond. Exit Marina Bay Parkway, and turn left to go over the freeway. Stay on Marina Bay Parkway until you reach Regatta Blvd. Turn right on Regatta Blvd. Follow it to Marina Way South where you turn left. Then turn right on Hall Avenue, then left on Harbour Way South and follow it to the waterfront.

From San Francisco, Berkeley:

Take 80 Eastbound to 580 Westbound. Exit Marina Bay Parkway and turn left to go over the freeway. Stay on Marina Bay Parkway until you reach Regatta Blvd. Turn right on Regatta Blvd. Follow it to Marina Way South where you turn left. Then turn right on Hall Avenue, then left on Harbour Way South and follow it to the waterfront.

From Marin:

Take the Richmond Bridge/580 Eastbound. Exit Cutting Blvd. Turn left onto Cutting Blvd. Make a right onto Harbour Way South and follow it to the waterfront.

From Sacramento:

Take 80 Westbound. Exit Cutting Blvd. Turn right onto Cutting Blvd. Turn left onto Harbour Way South and follow it to the waterfront.

By Water

Contact Marina Bay Yacht Harbor at (510) 236-1013.

Public Transit

AC Transit (Alameda and Contra Costa Counties bus service connecting the East Bay and SF) 511
Airport Transportation 511
Amtrak Passenger Trains (800) 872-7245

BART (Bay Area Rapid Transit connecting San Francisco, Daly City, SFO and 25 East Bay cities) (650) 992-2278 or (510) 465-2278

Golden Gate Transit (415) 455-2000
Greyhound Bus (800) 231-2222
Muni (SF Bus and Cable Car) 511 or (415) 673-6864
Regional Transportation Information 511



Courtyard by Marriott® Oakland Emeryville
5555 Shellmound Street, Emeryville, CA 94608

800-828-4720

www.marriott.com

Just over the Bay Bridge from San Francisco, 10 minutes from Berkeley and just north of Oakland, the Courtyard by Marriott® Oakland Emeryville is centrally located within the Bay Area, making it the perfect home base.

Book your group rate for the show at the website or phone number above and use booking code: Pacific Sail & Power 2018

Additional Convenient Hotels

Berkeley City Club, Berkeley	(510) 848-7800
Claremont Club & Spa, Berkeley	(510) 843-3000
Courtyard Marriott, Larkspur	(415) 925-1800
DoubleTree by Hilton, Berkeley	(510) 548-7920
Holiday Inn Express, Berkeley	(510) 548-1700
Hotel Durant, Berkeley	(510) 845-8981
Hotel Mac, Point Richmond	(510) 233-0576
Hotel Shattuck Plaza, Berkeley	(510) 845-7300
Extended Stay, San Rafael	(415) 451-1887

SILVER SEAS YACHTS

 a SkipperBud's affiliate



***Your Exclusive Dealer For
These World-Class Brands***



**More than 20 NEW yachts in-stock.
More than 250 pre-owned yachts available.**

Located at: Clipper Yacht Harbor • 300 Harbor Drive, Sausalito, CA

Also in: Newport Beach • San Diego • Seattle • Scottsdale

www.SilverSeasYachts.com • 415-367-4022



Family Cruiser

SUN ODYSSEY 440

Life at sea reinvented

For the past 60 years, Jeanneau has led the way in modern yacht design by embracing innovative thinking and modern technology. Today, fresh from the drawing boards of Philippe Briand and Jean-Marc Piaton comes the Sun Odyssey 440, an entirely new generation of Jeanneau completely reimagined to meet the needs of today's cruising sailor. From the inclined side decks to the split rigging and gentle companionway, life aboard has never been so comfortable.

**JEANNEAU**

jeanneau.com